

50 Dairy Farm Walk S(679268)

Stack / Level	1	2	3	4	5	6	7	8
6	B3H #06-01	B5H #06-02	B6H #06-03	B7H-S #06-04	B7H-S #06-05	B6H #06-06	B5H #06-07	B3H #06-08
5	B3H #05-01	B5H #05-02	B6H #05-03	B7H-S #05-04	B7H-S #05-05	B6H #05-06	B5H #05-07	B3H #05-08
4	B3H #04-01	B5H #04-02	B6H #04-03	B7H-S #04-04	B7H-S #04-05	B6H #04-06	B5H #04-07	B3H #04-08
3	B3H #03-01	B5H #03-02	B6H #03-03	B7H-S #03-04	B7H-S #03-05	B6H #03-06	B5H #03-07	B3H #03-08
2	B3H #02-01	B5H #02-02	B6H #02-03	B7H-S #02-04	B7H-S #02-05	B6H #02-06	B5H #02-07	B3H #02-08
1	B3H-PES #01-01	B5H-PES #01-02	B6H-PES #01-03	B7H-S-PES #01-04	B7H-S-PES #01-05	B6H-PES #01-06	B5H-PES #01-07	B3H-PES #01-08

52 Dairy Farm Walk S(679269)

Stack / Level	9	10	11	12	13	14	15	16
6	B3H #06-09	C7P #06-10	B6H #06-11	B7H-S #06-12	B7H-S #06-13	C4P #06-14	C10S #06-15	B3H #06-16
5	B3H #05-09	C7P #05-10	B6H #05-11	B7H-S #05-12	B7H-S #05-13	C4P #05-14	C10S #05-15	B3H #05-16
4	B3H #04-09	C7P #04-10	B6H #04-11	B7H-S #04-12	B7H-S #04-13	C4P #04-14	C10S #04-15	B3H #04-16
3	B3H #03-09	C7P #03-10	B6H #03-11	B7H-S #03-12	B7H-S #03-13	C4P #03-14	C10S #03-15	B3H #03-16
2	B3H #02-09	C7P #02-10	B6H #02-11	B7H-S #02-12	B7H-S #02-13	C4P #02-14	C10S #02-15	B3H #02-16
1	B3H-PES #01-09	C7P-PES #01-10	B6H-PES #01-11	B7H-S-PES #01-12	B7H-S-PES #01-13	C4P-PES #01-14	C10S-PES #01-15	B3H-PES #01-16

54 Dairy Farm Walk S(679270)

Stack / Level	17	18	19	20	21	22
6	C9S #06-17	C6P #06-18	B4H #06-19	C5P #06-20	D1 #06-21	B4H #06-22
5	C9S #05-17	C6P #05-18	B4H #05-19	C5P #05-20	D1 #05-21	B4H #05-22
4	C9S #04-17	C6P #04-18	B4H #04-19	C5P #04-20	D1 #04-21	B4H #04-22
3	C9S #03-17	C6P #03-18	B4H #03-19	C5P #03-20	D1 #03-21	B4H #03-22
2	C9S #02-17	C6P #02-18	B4H #02-19	C5P #02-20	D1 #02-21	B4H #02-22
1	C9S-PES #01-17	C6P-PES #01-18	B4H-PES #01-19	C5P-PES #01-20	D1-PES #01-21	B4H-PES #01-22

58 Dairy Farm Walk S(679274)

Stack / Level	27	28	29	30	31	32	33	34
13	B2P #13-27	D1 #13-28	C1 #13-29	B8S #13-30	B8S #13-31	C5P #13-32	C9S #13-33	B2P #13-34
12	B2P #12-27	D1 #12-28	C1 #12-29	B8S #12-30	B8S #12-31	C5P #12-32	C9S #12-33	B2P #12-34
11	B2P #11-27	D1 #11-28	C1 #11-29	B8S #11-30	B8S #11-31	C5P #11-32	C9S #11-33	B2P #11-34
10	B2P #10-27	D1 #10-28	C1 #10-29	B8S #10-30	B8S #10-31	C5P #10-32	C9S #10-33	B2P #10-34
9	B2P #09-27	D1 #09-28	C1 #09-29	B8S #09-30	B8S #09-31	C5P #09-32	C9S #09-33	B2P #09-34
8	B2P #08-27	D1 #08-28	C1 #08-29	B8S #08-30	B8S #08-31	C5P #08-32	C9S #08-33	B2P #08-34
7	B2P #07-27	D1 #07-28	C1 #07-29	B8S #07-30	B8S #07-31	C5P #07-32	C9S #07-33	B2P #07-34
6	B2P #06-27	D1 #06-28	C1 #06-29	B8S #06-30	B8S #06-31	C5P #06-32	C9S #06-33	B2P #06-34
5	B2P #05-27	D1 #05-28	C1 #05-29	B8S #05-30	B8S #05-31	C5P #05-32	C9S #05-33	B2P #05-34
4	B2P #04-27	D1 #04-28	C1 #04-29	B8S #04-30	B8S #04-31	C5P #04-32	C9S #04-33	B2P #04-34
3	B2P #03-27	D1 #03-28	C1 #03-29	B8S #03-30	B8S #03-31	C5P #03-32	C9S #03-33	B2P #03-34
2	B2P #02-27	D1 #02-28	C1 #02-29	B8S #02-30	B8S #02-31	C5P #02-32	C9S #02-33	B2P #02-34
1	B2P-PES #01-27	D1-PES #01-28	C1-PES #01-29	A15-PES #01-30	B8S-PES #01-31	C5P-PES #01-32	C9S-PES #01-33	B2P-PES #01-34

56 Dairy Farm Walk S(679273)

Stack / Level	23	24	25	26
13	D2P #13-23	D2P #13-24	E2 #13-25	E1 #13-26
12	D2P #12-23	D2P #12-24	E2 #12-25	E1 #12-26
11	D2P #11-23	D2P #11-24	E2 #11-25	E1 #11-26
10	D2P #10-23	D2P #10-24	E2 #10-25	E1 #10-26
9	D2P #09-23	D2P #09-24	E2 #09-25	E1 #09-26
8	D2P #08-23	D2P #08-24	E2 #08-25	E1 #08-26
7	D2P #07-23	D2P #07-24	E2 #07-25	E1 #07-26
6	D2P #06-23	D2P #06-24	E2 #06-25	E1 #06-26
5	D2P #05-23	D2P #05-24	E2 #05-25	E1 #05-26
4	D2P #04-23	D2P #04-24	E2 #04-25	E1 #04-26
3	D2P #03-23	D2P #03-24	E2 #03-25	E1 #03-26
2	D2P #02-23	D2P #02-24	E2 #02-25	E1 #02-26
1	D2P-PES #01-23	D2P-PES #01-24	E2-PES #01-25	E1-PES #01-26

60 Dairy Farm Walk S(679275)

Stack / Level	35	36	37	38	39	40	41	42
16	B1 #16-35	C1 #16-36	C5P #16-37	B8S #16-38	B8S #16-39	C3P #16-40	C2 #16-41	B1 #16-42
15	B1 #15-35	C1 #15-36	C5P #15-37	B8S #15-38	B8S #15-39	C3P #15-40	C2 #15-41	B1 #15-42
14	B1 #14-35	C1 #14-36	C5P #14-37	B8S #14-38	B8S #14-39	C3P #14-40	C2 #14-41	B1 #14-42
13	B1 #13-35	C1 #13-36	C5P #13-37	B8S #13-38	B8S #13-39	C3P #13-40	C2 #13-41	B1 #13-42
12	B1 #12-35	C1 #12-36	C5P #12-37	B8S #12-38	B8S #12-39	C3P #12-40	C2 #12-41	B1 #12-42
11	B1 #11-35	C1 #11-36	C5P #11-37	B8S #11-38	B8S #11-39	C3P #11-40	C2 #11-41	B1 #11-42
10	B1 #10-35	C1 #10-36	C5P #10-37	B8S #10-38	B8S #10-39	C3P #10-40	C2 #10-41	B1 #10-42
9	B1 #09-35	C1 #09-36	C5P #09-37	B8S #09-38	B8S #09-39	C3P #09-40	C2 #09-41	B1 #09-42
8	B1 #08-35	C1 #08-36	C5P #08-37	B8S #08-38	B8S #08-39	C3P #08-40	C2 #08-41	B1 #08-42
7	B1 #07-35	C1 #07-36	C5P #07-37	B8S #07-38	B8S #07-39	C3P #07-40	C2 #07-41	B1 #07-42
6	B1 #06-35	C1 #06-36	C5P #06-37	B8S #06-38	B8S #06-39	C3P #06-40	C2 #06-41	B1 #06-42
5	B1 #05-35	C1 #05-36	C5P #05-37	B8S #05-38	B8S #05-39	C3P #05-40	C2 #05-41	B1 #05-42
4	B1 #04-35	C1 #04-36	C5P #04-37	B8S #04-38	B8S #04-39	C3P #04-40	C2 #04-41	B1 #04-42
3	B1 #03-35	C1 #03-36	C5P #03-37	B8S #03-38	B8S #03-39	C3P #03-40	C2 #03-41	B1 #03-42
2	B1-PES #02-35	C1-PES #02-36	C5P #02-37	B8S #02-38	B8S #02-39	C3P #02-40	C2-PES #02-41	B1-PES #02-42
1			C5P-PES #01-37	B8S-PES #01-38	A15-PES #01-39	C3P-PES #01-40		

62 Dairy Farm Walk S(679276)

Stack / Level	43	44	45	46	47	48	49	50
16	B2P #16-43	C2 #16-44	C3P #16-45	B8S #16-46	B8S #16-47	C8P #16-48	D1 #16-49	B2P #16-50
15	B2P #15-43	C2 #15-44	C3P #15-45	B8S #15-46	B8S #15-47	C8P #15-48	D1 #15-49	B2P #15-50
14	B2P #14-43	C2 #14-44	C3P #14-45	B8S #14-46	B8S #14-47	C8P #14-48	D1 #14-49	B2P #14-50
13	B2P #13-43	C2 #13-44	C3P #13-45	B8S #13-46	B8S #13-47	C8P #13-48	D1 #13-49	B2P #13-50
12	B2P #12-43	C2 #12-44	C3P #12-45	B8S #12-46	B8S #12-47	C8P #12-48	D1 #12-49	B2P #12-50
11	B2P #11-43	C2 #11-44	C3P #11-45	B8S #11-46	B8S #11-47	C8P #11-48	D1 #11-49	B2P #11-50
10	B2P #10-43	C2 #10-44	C3P #10-45	B8S #10-46	B8S #10-47	C8P #10-48	D1 #10-49	B2P #10-50
9	B2P #09-43	C2 #09-44	C3P #09-45	B8S #09-46	B8S #09-47	C8P #09-48	D1 #09-49	B2P #09-50
8	B2P #08-43	C2 #08-44	C3P #08-45	B8S #08-46	B8S #08-47	C8P #08-48	D1 #08-49	B2P #08-50
7	B2P #07-43	C2 #07-44	C3P #07-45	B8S #07-46	B8S #07-47	C8P #07-48	D1 #07-49	B2P #07-50
6	B2P #06-43	C2 #06-44	C3P #06-45	B8S #06-46	B8S #06-47	C8P #06-48	D1 #06-49	B2P #06-50
5	B2P #05-43	C2 #05-44	C3P #05-45	B8S #05-46	B8S #05-47	C8P #05-48	D1 #05-49	B2P #05-50
4	B2P #04-43	C2 #04-44	C3P #04-45	B8S #04-46	B8S #04-47	C8P #04-48	D1 #04-49	B2P #04-50
3	B2P #03-43	C2 #03-44	C3P #03-45	B8S #03-46	B8S #03-47	C8P #03-48	D1 #03-49	B2P #03-50
2	B2P #02-43	C2 #02-44	C3P #02-45	B8S #02-46	B8S #02-47	C8P #02-48	D1 #02-49	B2P #02-50
1	B2P-PES #01-43	C2-PES #01-44	C3P-PES #01-45	A15-PES #01-46	B8S-PES #01-47	C8P-PES #01-48	D1-PES #01-49	B2P-PES #01-50

## Schematic Diagram

### Legend

- 1-Bedroom with Study A1S
- 2-Bedroom Compact B1
- 2-Bedroom Premium B2P
- 2-Bedroom with HS B3H, B4H, B5H, B6H
- 2-Bedroom with HS + Study B7H-S
- 2-Bedroom with Study B8S
- 3-Bedroom Compact C1
- 3-Bedroom Flexi C2
- 3-Bedroom Premium C3P, C4P, C5P, C6P, C7P, C8P
- 3-Bedroom with Study C9S, C10S
- 4-Bedroom Compact D1
- 4-Bedroom Premium D2P
- 5-Bedroom with Private Lift E1, E2

# 1-Bedroom with Study

## Type A1S - PES

48 sqm / 517 sqft

BLK 58  
#01-30

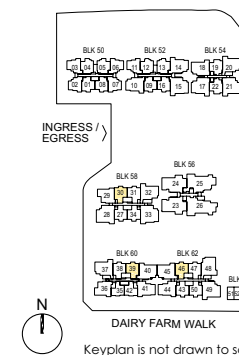
BLK 60  
#01-39\*

BLK 62  
#01-46



- Legend (Where Applicable):
- F - Fridge
  - W/D - Washer cum Dryer
  - TB - Tailbooy
  - WC - Water Closet
  - HS - Household Shelter
  - WD - Washer & Dryer
  - WI - Wine Chiller
  - SC / ST - Shoe Cabinet / Store
  - DB / ST - Distribution Board / Store
  - RC Ledge - Reinforced Concrete Ledge
  - AC Ledge - Air-conditioner Ledge
  - Air-Conditioning condenser unit
  - Wall not allowed to be hacked or altered (including by way of drilling)
  - Services void space (excluded from strata area)
  - Rainwater downpipe shaft space (excluded from strata area)

DISCLAIMER: Area includes balcony where applicable, and excludes among others, the air-conditioner (AC) ledge and RC - Reinforced Concrete Ledge. Please refer to the key plan for orientation. All floor plans are approximate measurements only and are subject to government re-survey. The Balcony shall not be enclosed unless with the approved balcony screen. The cost of screen and installation shall be borne by the Purchaser.



# 2-Bedroom Compact

## Type B1

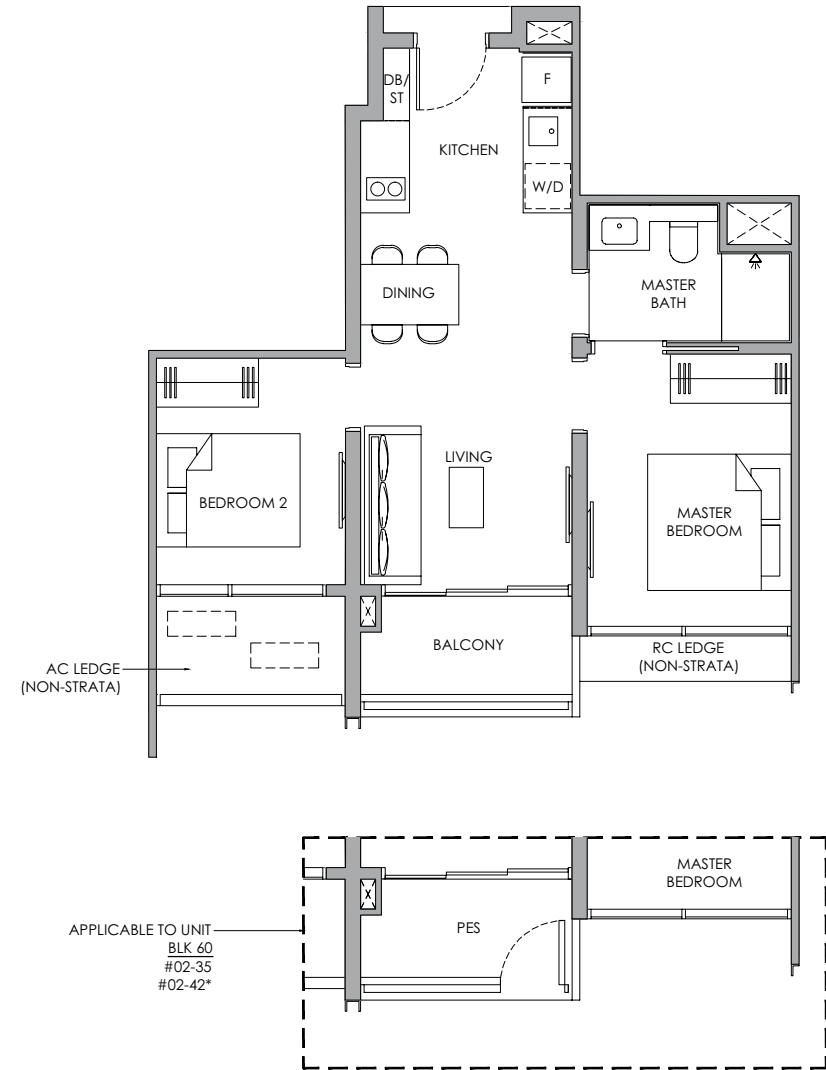
52 sqm / 560 sqft

BLK 60  
#03-35 to #16-35  
#03-42 to #16-42\*

## Type B1- PES

52 sqm / 560 sqft

BLK 60  
#02-35  
#02-42\*



Legend (Where Applicable) :

F - Fridge	WC - Water Closet	SC / ST - Shoe Cabinet / Store
W/D - Washer cum Dryer	HS - Household Shelter	DB / ST - Distribution Board / Store
TB - Tallboy	WD - Washer & Dryer	RC Ledge - Reinforced Concrete Ledge
* Mirror Image	WI - Wine Chiller	AC Ledge - Air-conditioner Ledge

- Air-Conditioning condenser unit
- Wall not allowed to be hacked or altered (including by way of drilling)
- Services void space (excluded from strata area)
- Rainwater downpipe shaft space (excluded from strata area)

DISCLAIMER: Area includes balcony where applicable, and excludes among others, the air-conditioner (AC) ledge and RC - Reinforced Concrete Ledge. Please refer to the key plan for orientation. All floor plans are approximate measurements only and are subject to government re-survey. The Balcony shall not be enclosed unless with the approved balcony screen. The cost of screen and installation shall be borne by the Purchaser.

# 2-Bedroom Premium

## Type B2P

60 sqm / 646 sqft

BLK 58  
#02-27 to #13-27\*  
#02-34 to #13-34

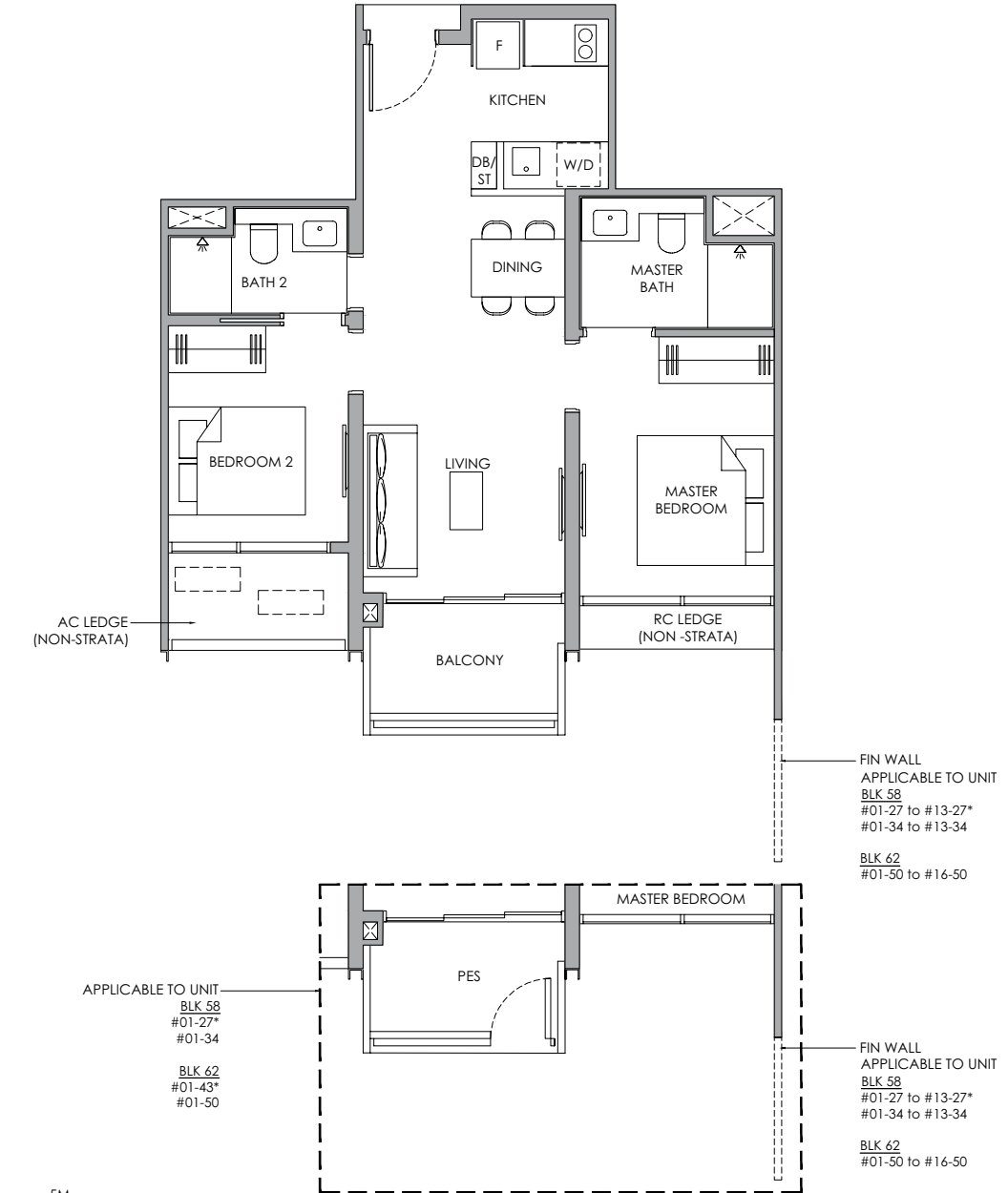
BLK 62  
#02-43 to #16-43\*  
#02-50 to #16-50

## Type B2P - PES

60 sqm / 646 sqft

BLK 58  
#01-27\*  
#01-34

BLK 62  
#01-43\*  
#01-50

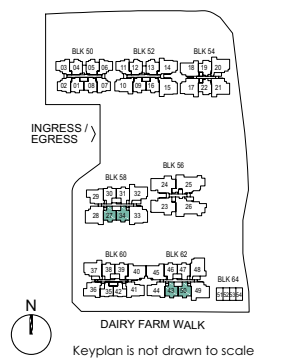
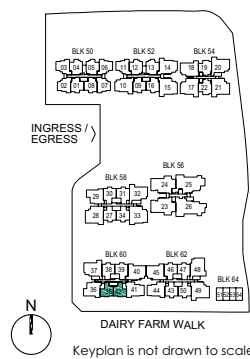


Legend (Where Applicable) :

F - Fridge	WC - Water Closet	SC / ST - Shoe Cabinet / Store
W/D - Washer cum Dryer	HS - Household Shelter	DB / ST - Distribution Board / Store
TB - Tallboy	WD - Washer & Dryer	RC Ledge - Reinforced Concrete Ledge
* Mirror Image	WI - Wine Chiller	AC Ledge - Air-conditioner Ledge

- Air-Conditioning condenser unit
- Wall not allowed to be hacked or altered (including by way of drilling)
- Services void space (excluded from strata area)
- Rainwater downpipe shaft space (excluded from strata area)

DISCLAIMER: Area includes balcony where applicable, and excludes among others, the air-conditioner (AC) ledge and RC - Reinforced Concrete Ledge. Please refer to the key plan for orientation. All floor plans are approximate measurements only and are subject to government re-survey. The Balcony shall not be enclosed unless with the approved balcony screen. The cost of screen and installation shall be borne by the Purchaser.



# 2-Bedroom with HS

**Type B3H**  
64 sqm / 689 sqft

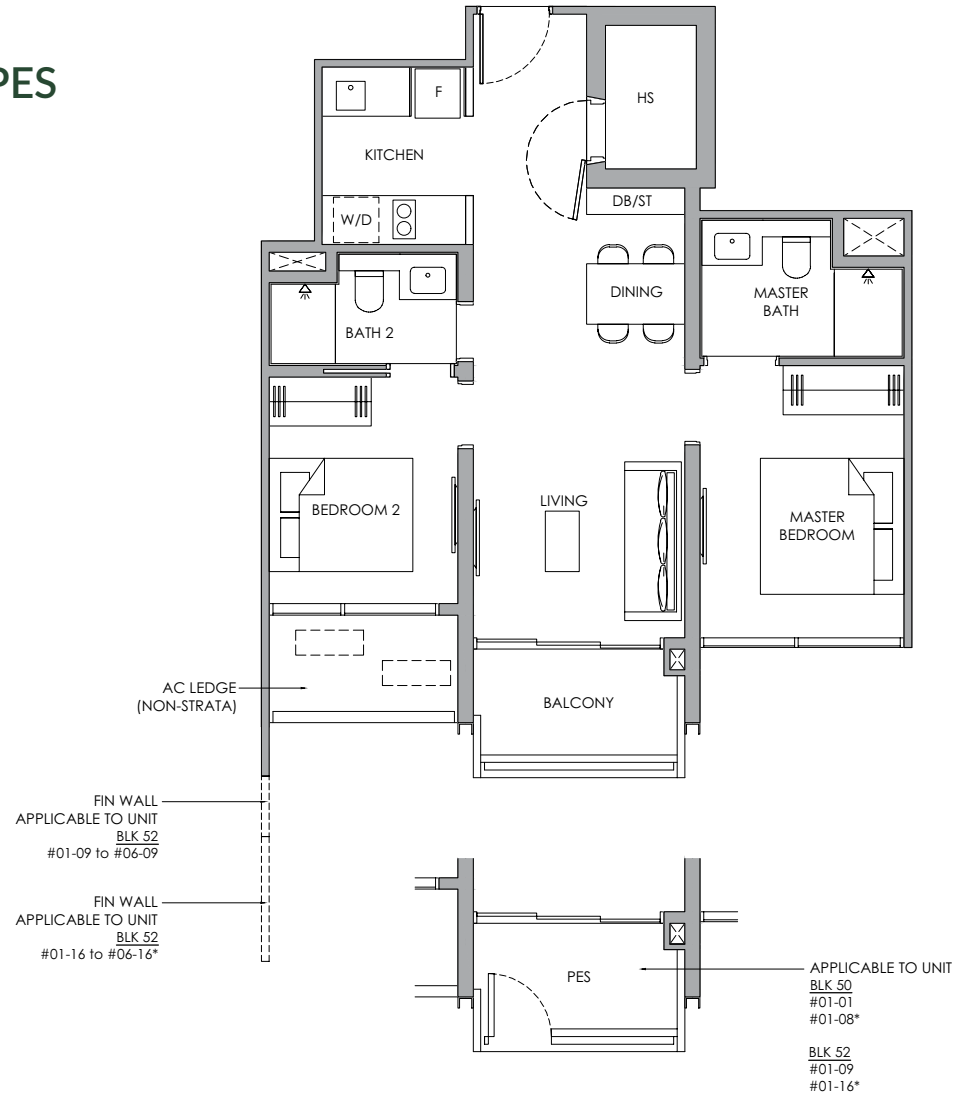
BLK 50  
#02-01 to #06-01  
#02-08 to #06-08\*

BLK 52  
#02-09 to #06-09  
#02-16 to #06-16\*

**Type B3H - PES**  
64 sqm / 689 sqft

BLK 50  
#01-01  
#01-08\*

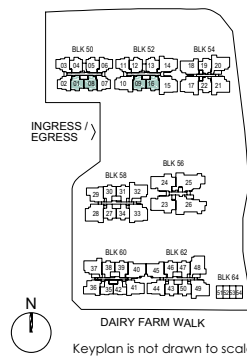
BLK 52  
#01-09  
#01-16\*



Legend (Where Applicable) :  
 F - Fridge WC - Water Closet SC / ST - Shoe Cabinet / Store  
 W/D - Washer cum Dryer HS - Household Shelter DB / ST - Distribution Board / Store  
 TB - Tallboy WD - Washer & Dryer RC Ledge - Reinforced Concrete Ledge  
 \* Mirror Image WI - Wine Chiller AC Ledge - Air-conditioner Ledge

--- Air-Conditioning condenser unit  
 [ ] Wall not allowed to be hacked or altered (including by way of drilling)  
 [ ] Services void space (excluded from strata area)  
 [ ] Rainwater downpipe shaft space (excluded from strata area)

DISCLAIMER: Area includes balcony where applicable, and excludes among others, the air-conditioner (AC) ledge and RC - Reinforced Concrete Ledge. Please refer to the key plan for orientation. All floor plans are approximate measurements only and are subject to government re-survey. The Balcony shall not be enclosed unless with the approved balcony screen. The cost of screen and installation shall be borne by the Purchaser.



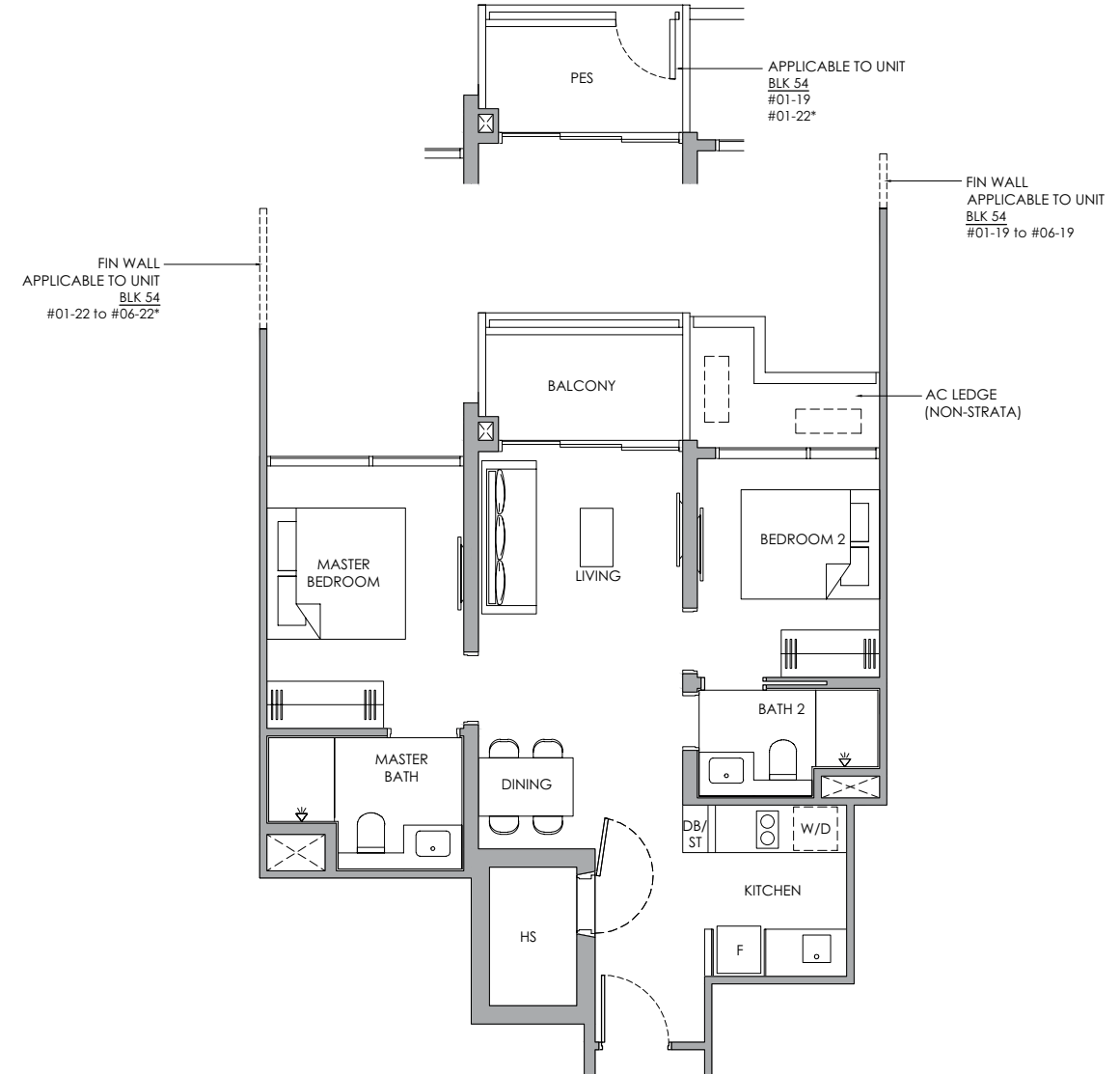
# 2-Bedroom with HS

**Type B4H**  
64 sqm / 689 sqft

BLK 54  
#02-19 to #06-19  
#02-22 to #06-22\*

**Type B4H - PES**  
64 sqm / 689 sqft

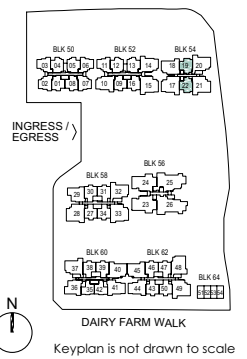
BLK 54  
#01-19  
#01-22\*



Legend (Where Applicable) :  
 F - Fridge WC - Water Closet SC / ST - Shoe Cabinet / Store  
 W/D - Washer cum Dryer HS - Household Shelter DB / ST - Distribution Board / Store  
 TB - Tallboy WD - Washer & Dryer RC Ledge - Reinforced Concrete Ledge  
 \* Mirror Image WI - Wine Chiller AC Ledge - Air-conditioner Ledge

--- Air-Conditioning condenser unit  
 [ ] Wall not allowed to be hacked or altered (including by way of drilling)  
 [ ] Services void space (excluded from strata area)  
 [ ] Rainwater downpipe shaft space (excluded from strata area)

DISCLAIMER: Area includes balcony where applicable, and excludes among others, the air-conditioner (AC) ledge and RC - Reinforced Concrete Ledge. Please refer to the key plan for orientation. All floor plans are approximate measurements only and are subject to government re-survey. The Balcony shall not be enclosed unless with the approved balcony screen. The cost of screen and installation shall be borne by the Purchaser.



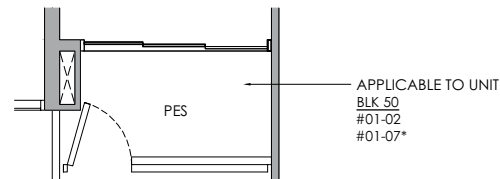
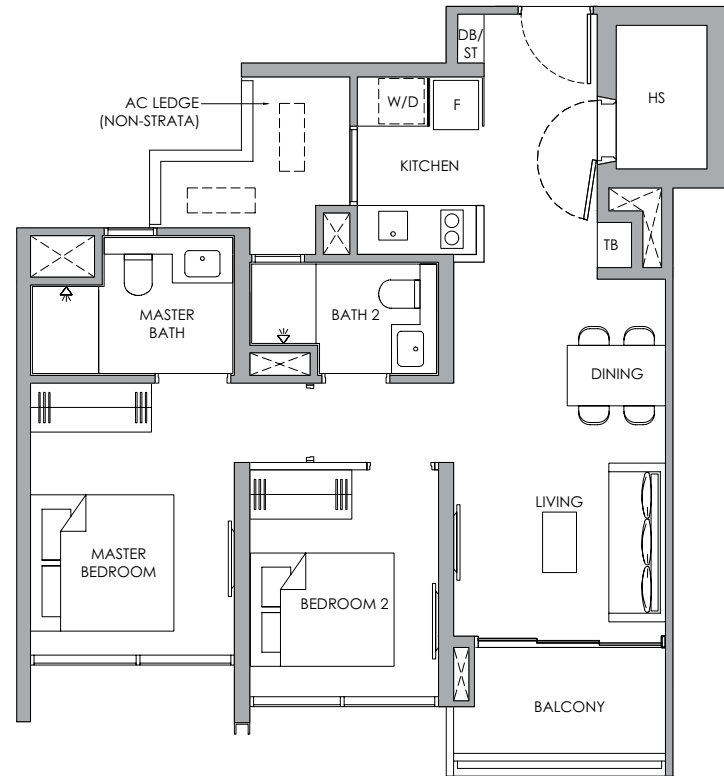
# 2-Bedroom with HS

**Type B5H**  
65 sqm / 700 sqft

BLK 50  
#02-02 to #06-02  
#02-07 to #06-07\*

**Type B5H - PES**  
65 sqm / 700 sqft

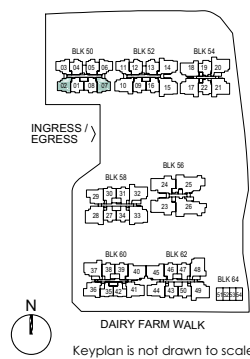
BLK 50  
#01-02  
#01-07\*



Legend (Where Applicable):  
 F - Fridge      WC - Water Closet      SC / ST - Shoe Cabinet / Store  
 W/D - Washer cum Dryer      HS - Household Shelter      DB / ST - Distribution Board / Store  
 TB - Tallboy      WD - Washer & Dryer      RC Ledge - Reinforced Concrete Ledge  
 \* Mirror Image      WI - Wine Chiller      AC Ledge - Air-conditioner Ledge

Air-Conditioning condenser unit  
 Wall not allowed to be hacked or altered (including by way of drilling)  
 Services void space (excluded from strata area)  
 Rainwater downpipe shaft space (excluded from strata area)

DISCLAIMER: Area includes balcony where applicable, and excludes among others, the air-conditioner (AC) ledge and RC - Reinforced Concrete Ledge. Please refer to the key plan for orientation. All floor plans are approximate measurements only and are subject to government re-survey. The Balcony shall not be enclosed unless with the approved balcony screen. The cost of screen and installation shall be borne by the Purchaser.



# 2-Bedroom with HS

**Type B6H**  
65 sqm / 700 sqft

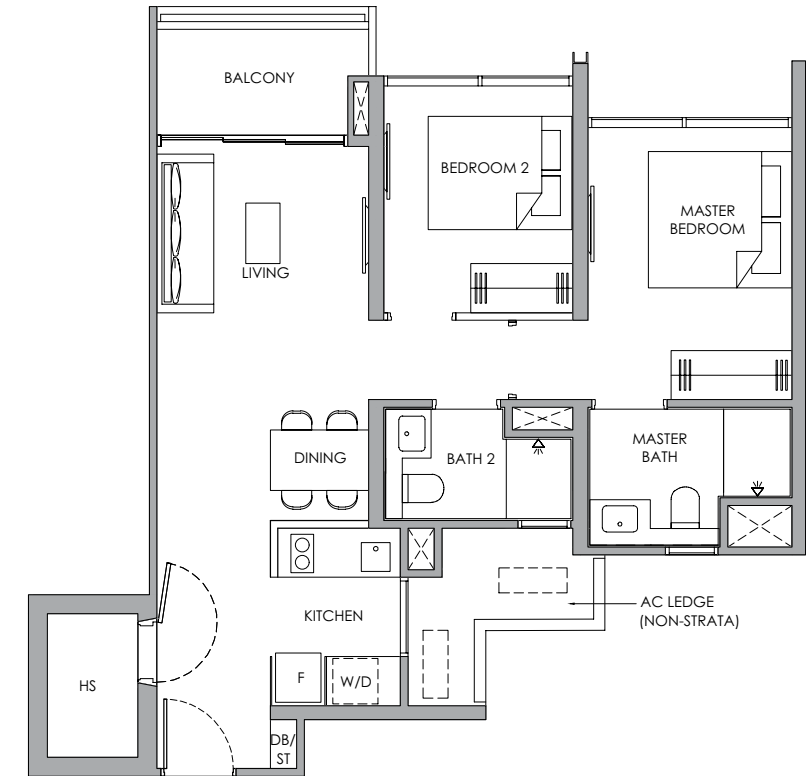
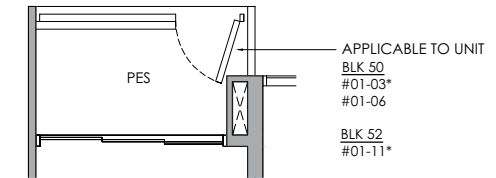
BLK 50  
#02-03 to #06-03\*  
#02-06 to #06-06

BLK 52  
#02-11 to #06-11\*

**Type B6H - PES**  
65 sqm / 700 sqft

BLK 50  
#01-03\*  
#01-06

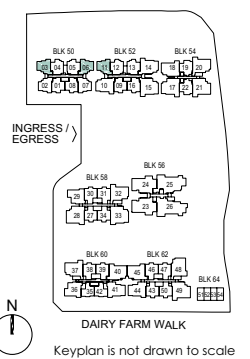
BLK 52  
#01-11\*



Legend (Where Applicable):  
 F - Fridge      WC - Water Closet      SC / ST - Shoe Cabinet / Store  
 W/D - Washer cum Dryer      HS - Household Shelter      DB / ST - Distribution Board / Store  
 TB - Tallboy      WD - Washer & Dryer      RC Ledge - Reinforced Concrete Ledge  
 \* Mirror Image      WI - Wine Chiller      AC Ledge - Air-conditioner Ledge

Air-Conditioning condenser unit  
 Wall not allowed to be hacked or altered (including by way of drilling)  
 Services void space (excluded from strata area)  
 Rainwater downpipe shaft space (excluded from strata area)

DISCLAIMER: Area includes balcony where applicable, and excludes among others, the air-conditioner (AC) ledge and RC - Reinforced Concrete Ledge. Please refer to the key plan for orientation. All floor plans are approximate measurements only and are subject to government re-survey. The Balcony shall not be enclosed unless with the approved balcony screen. The cost of screen and installation shall be borne by the Purchaser.



# 2-Bedroom with HS + Study

## Type B7H-S

67 sqm / 721 sqft

BLK 50  
#02-04 to #06-04\*  
#02-05 to #06-05

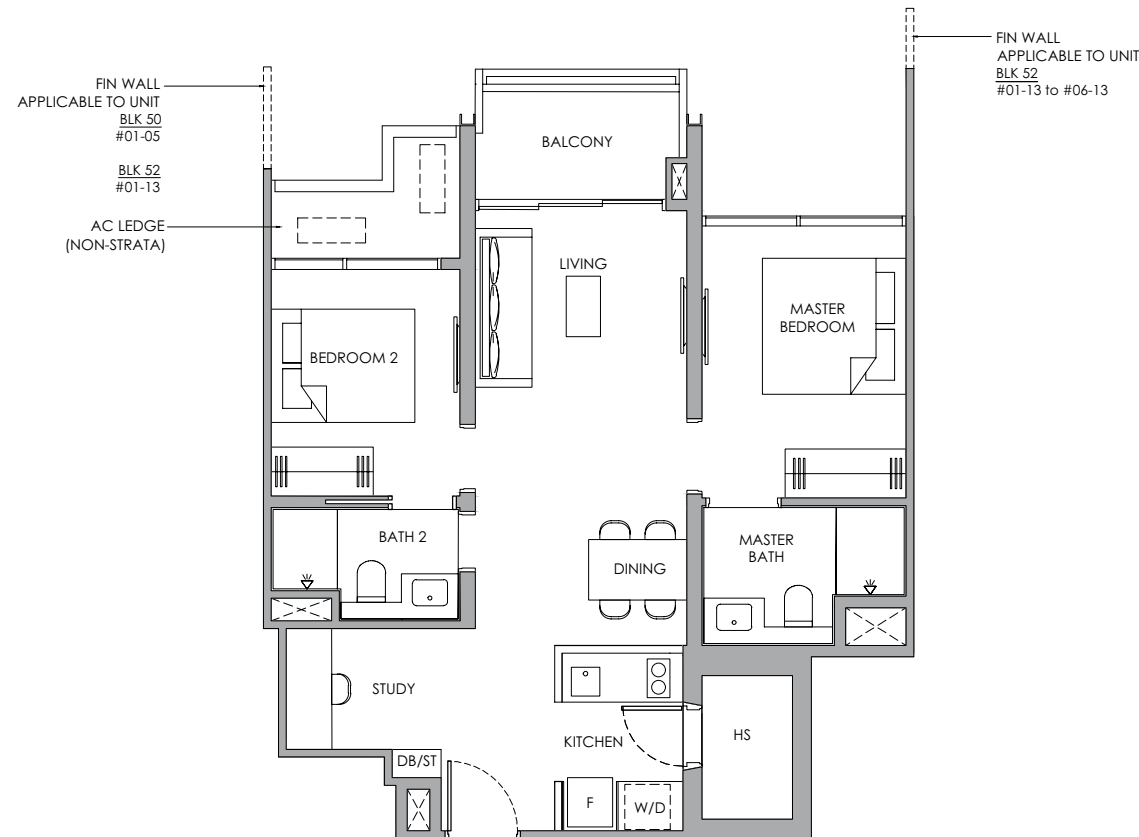
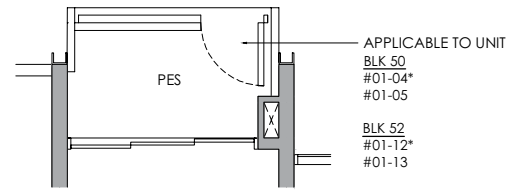
BLK 52  
#02-12 to #06-12\*  
#02-13 to #06-13

## Type B7H-S - PES

67 sqm / 721 sqft

BLK 50  
#01-04\*  
#01-05

BLK 52  
#01-12\*  
#01-13

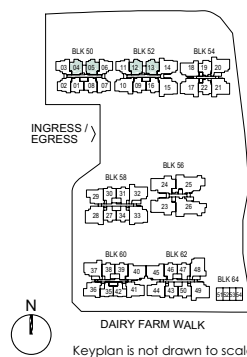


Legend (Where Applicable) :

F - Fridge	WC - Water Closet	SC / ST - Shoe Cabinet / Store
W/D - Washer cum Dryer	HS - Household Shelter	DB / ST - Distribution Board / Store
TB - Tallboy	WD - Washer & Dryer	RC Ledge - Reinforced Concrete Ledge
* Mirror Image	WI - Wine Chiller	AC Ledge - Air-conditioner Ledge

- Air-Conditioning condenser unit
- Wall not allowed to be hacked or altered (including by way of drilling)
- Services void space (excluded from strata area)
- Rainwater downpipe shaft space (excluded from strata area)

DISCLAIMER: Area includes balcony where applicable, and excludes among others, the air-conditioner (AC) ledge and RC - Reinforced Concrete Ledge. Please refer to the key plan for orientation. All floor plans are approximate measurements only and are subject to government re-survey. The Balcony shall not be enclosed unless with the approved balcony screen. The cost of screen and installation shall be borne by the Purchaser.



# 2-Bedroom with Study

## Type B8S

67 sqm / 721 sqft

BLK 58  
#02-30 to #13-30\*  
#02-31 to #13-31

BLK 60  
#02-38 to #16-38\*  
#02-39 to #16-39

BLK 62  
#02-46 to #16-46\*  
#02-47 to #16-47

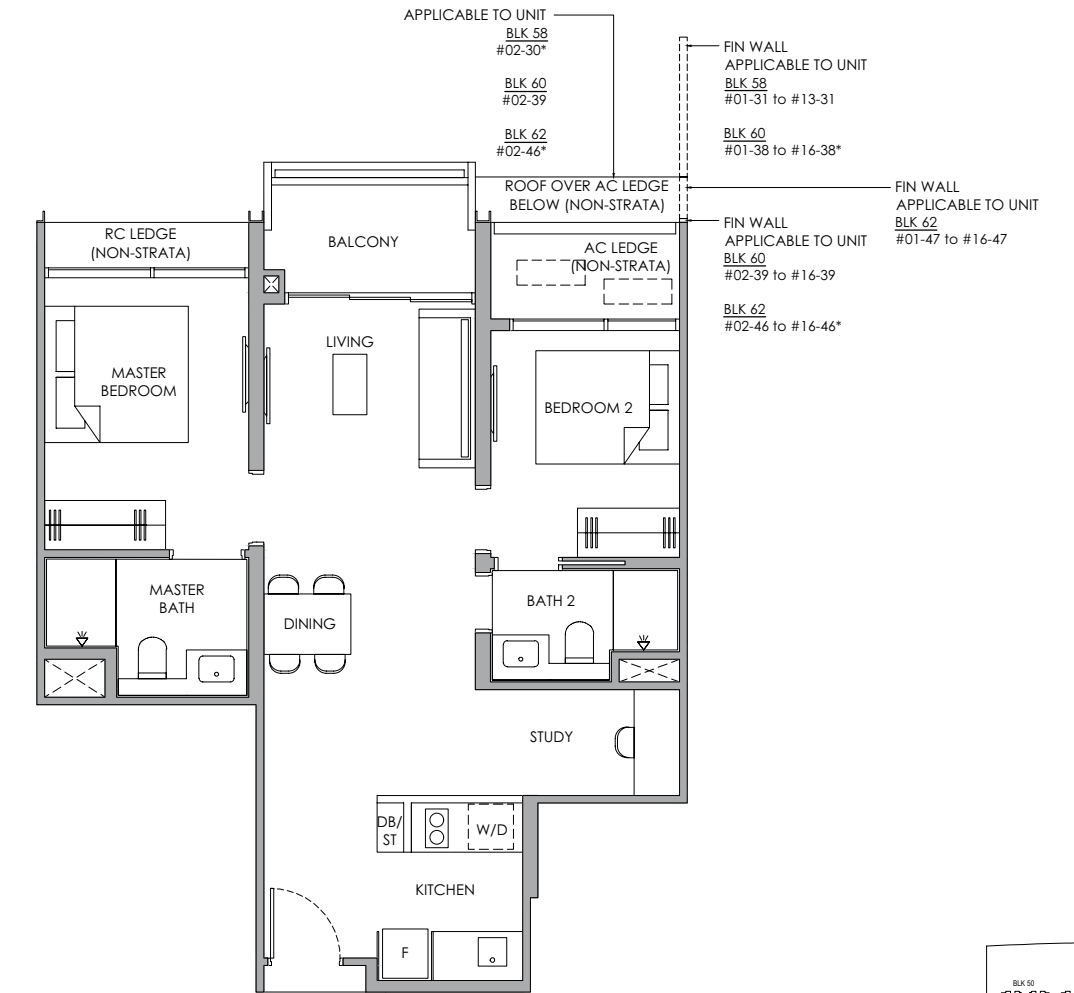
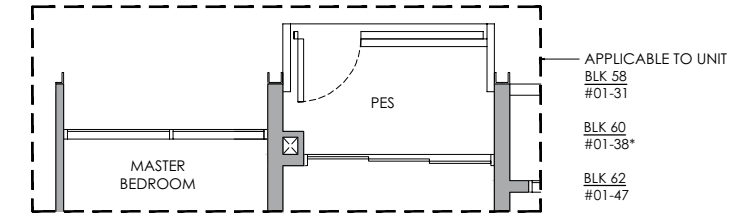
## Type B8S - PES

67 sqm / 721 sqft

BLK 58  
#01-31

BLK 60  
#01-38\*

BLK 62  
#01-47

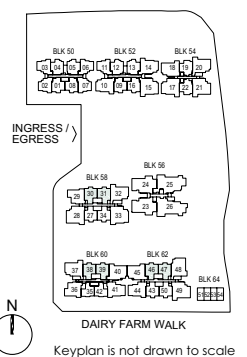


Legend (Where Applicable) :

F - Fridge	WC - Water Closet	SC / ST - Shoe Cabinet / Store
W/D - Washer cum Dryer	HS - Household Shelter	DB / ST - Distribution Board / Store
TB - Tallboy	WD - Washer & Dryer	RC Ledge - Reinforced Concrete Ledge
* Mirror Image	WI - Wine Chiller	AC Ledge - Air-conditioner Ledge

- Air-Conditioning condenser unit
- Wall not allowed to be hacked or altered (including by way of drilling)
- Services void space (excluded from strata area)
- Rainwater downpipe shaft space (excluded from strata area)

DISCLAIMER: Area includes balcony where applicable, and excludes among others, the air-conditioner (AC) ledge and RC - Reinforced Concrete Ledge. Please refer to the key plan for orientation. All floor plans are approximate measurements only and are subject to government re-survey. The Balcony shall not be enclosed unless with the approved balcony screen. The cost of screen and installation shall be borne by the Purchaser.



# 3-Bedroom Compact

## Type C1

76 sqm / 818 sqft

BLK 58  
#02-29 to #13-29\*

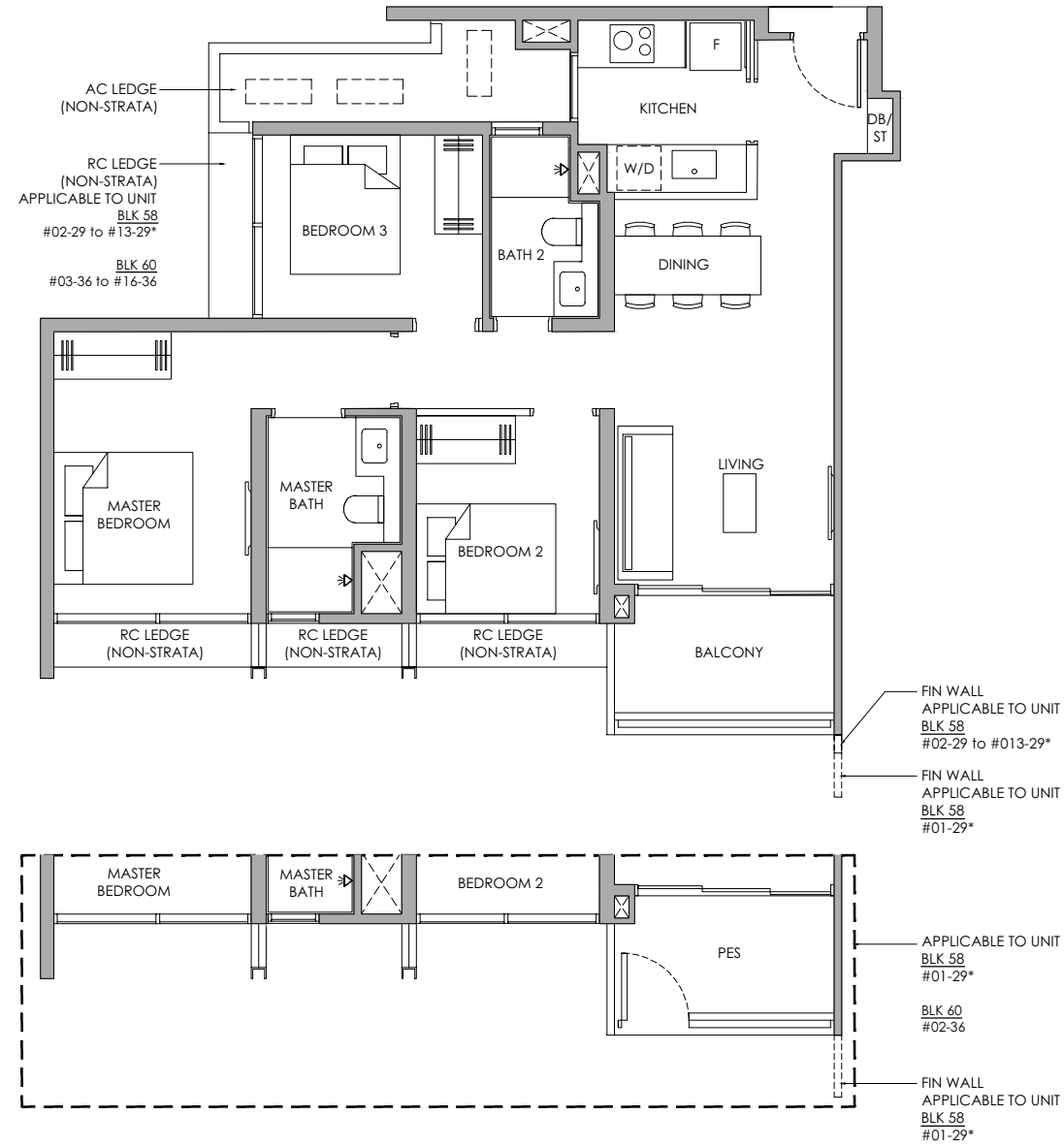
BLK 60  
#03-36 to #16-36

## Type C1 - PES

76 sqm / 818 sqft

BLK 58  
#01-29\*

BLK 60  
#02-36

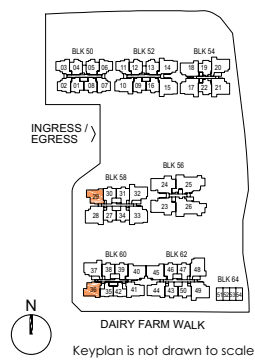


Legend (Where Applicable) :

F - Fridge	WC - Water Closet	SC / ST - Shoe Cabinet / Store
W/D - Washer cum Dryer	HS - Household Shelter	DB / ST - Distribution Board / Store
TB - Tallboy	WD - Washer & Dryer	RC Ledge - Reinforced Concrete Ledge
* Mirror Image	WI - Wine Chiller	AC Ledge - Air-conditioner Ledge

- Air-Conditioning condenser unit
- Wall not allowed to be hacked or altered (including by way of drilling)
- Services void space (excluded from strata area)
- Rainwater downpipe shaft space (excluded from strata area)

DISCLAIMER: Area includes balcony where applicable, and excludes among others, the air-conditioner (AC) ledge and RC - Reinforced Concrete Ledge. Please refer to the key plan for orientation. All floor plans are approximate measurements only and are subject to government re-survey. The Balcony shall not be enclosed unless with the approved balcony screen. The cost of screen and installation shall be borne by the Purchaser.



# 3-Bedroom Flexi

## Type C2

81 sqm / 872 sqft

BLK 60  
#03-41 to #16-41\*

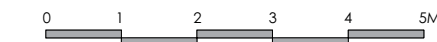
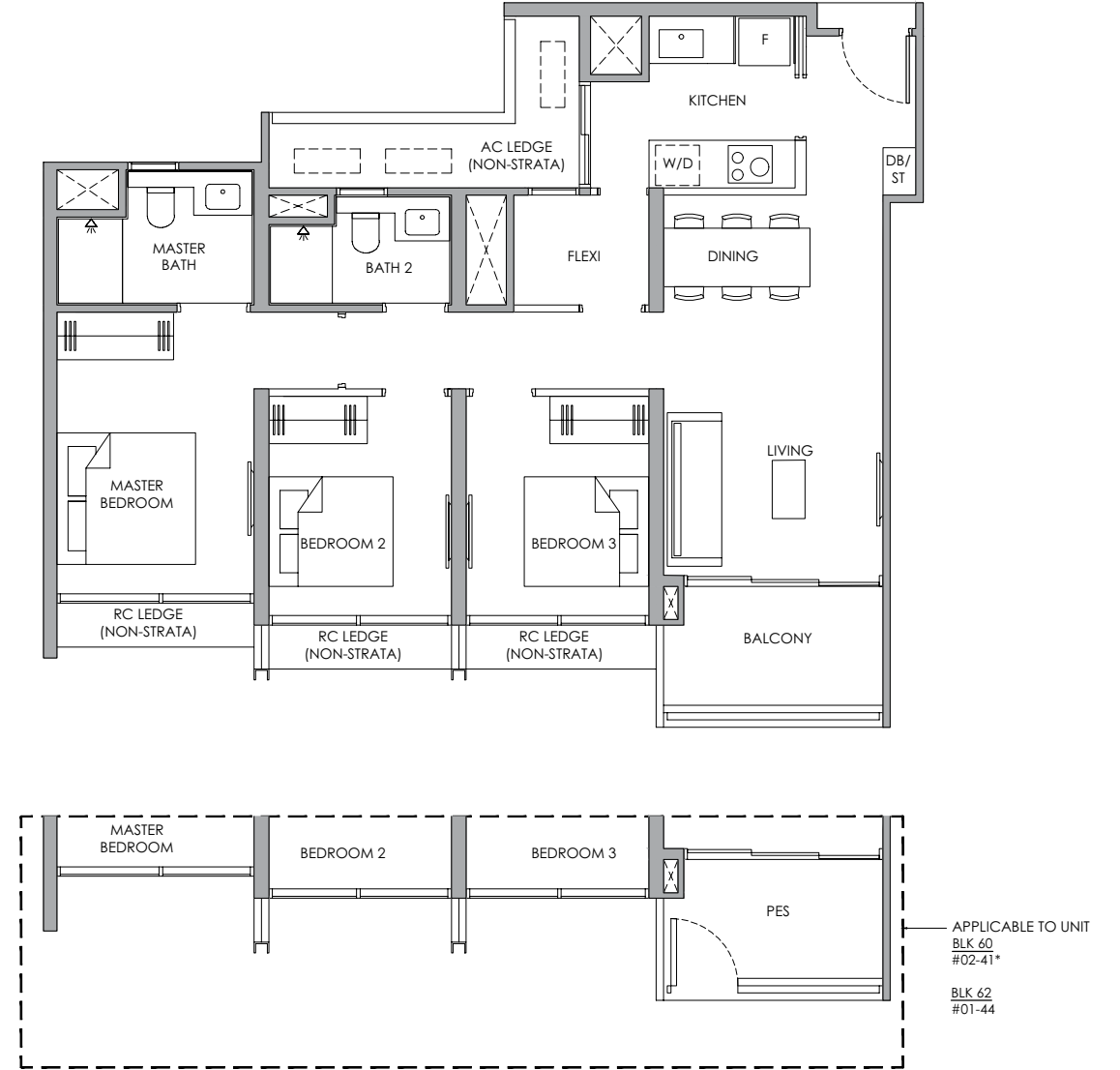
BLK 62  
#02-44 to #16-44

## Type C2 - PES

81 sqm / 872 sqft

BLK 60  
#02-41\*

BLK 62  
#01-44

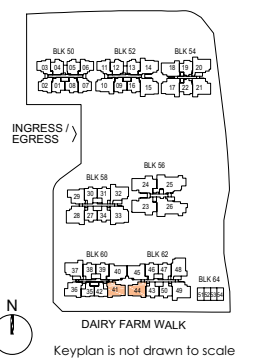


Legend (Where Applicable) :

F - Fridge	WC - Water Closet	SC / ST - Shoe Cabinet / Store
W/D - Washer cum Dryer	HS - Household Shelter	DB / ST - Distribution Board / Store
TB - Tallboy	WD - Washer & Dryer	RC Ledge - Reinforced Concrete Ledge
* Mirror Image	WI - Wine Chiller	AC Ledge - Air-conditioner Ledge

- Air-Conditioning condenser unit
- Wall not allowed to be hacked or altered (including by way of drilling)
- Services void space (excluded from strata area)
- Rainwater downpipe shaft space (excluded from strata area)

DISCLAIMER: Area includes balcony where applicable, and excludes among others, the air-conditioner (AC) ledge and RC - Reinforced Concrete Ledge. Please refer to the key plan for orientation. All floor plans are approximate measurements only and are subject to government re-survey. The Balcony shall not be enclosed unless with the approved balcony screen. The cost of screen and installation shall be borne by the Purchaser.



# 3-Bedroom Premium

## Type C3P

93 sqm / 1001 sqft

BLK 60  
#02-40 to #16-40

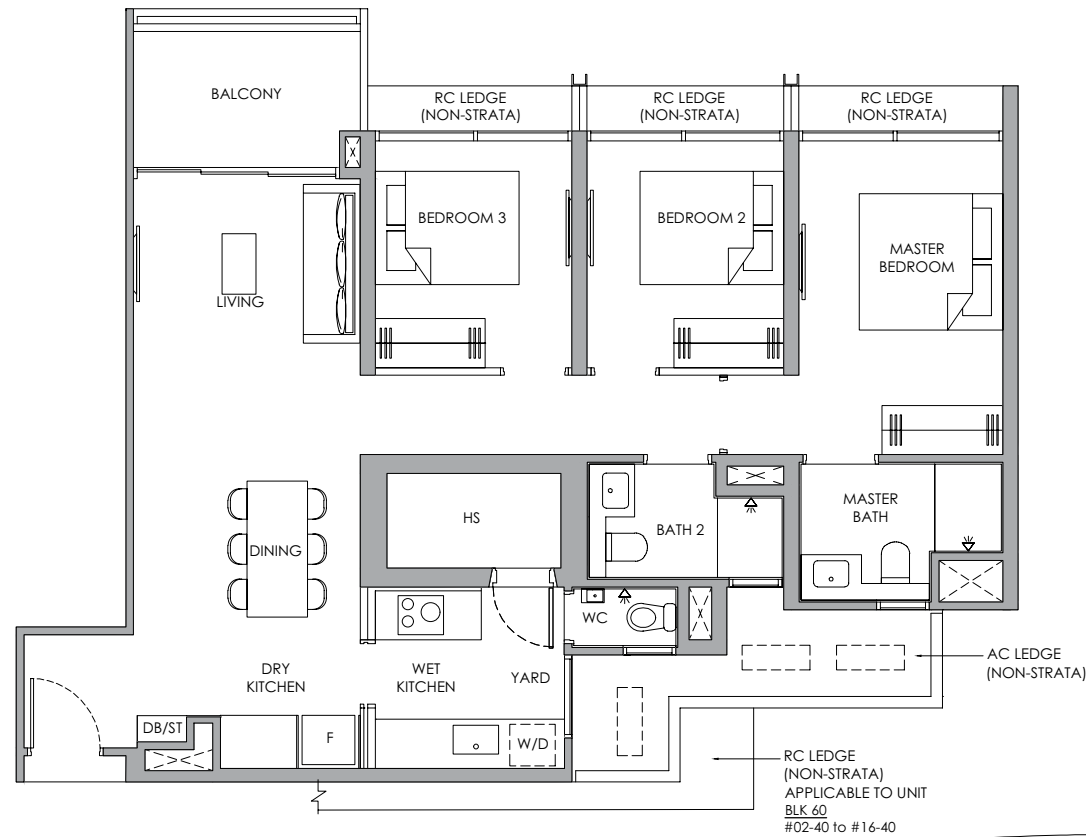
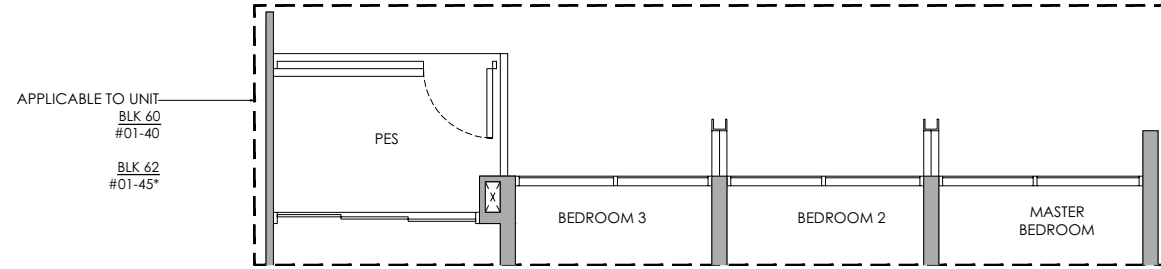
BLK 62  
#02-45 to #16-45\*

## Type C3P - PES

93 sqm / 1001 sqft

BLK 60  
#01-40

BLK 62  
#01-45\*

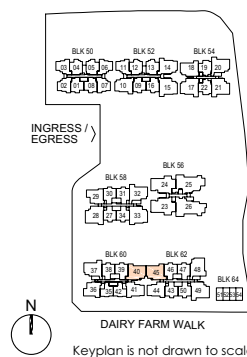


Legend (Where Applicable) :

F - Fridge	WC - Water Closet	SC / ST - Shoe Cabinet / Store
W/D - Washer cum Dryer	HS - Household Shelter	DB / ST - Distribution Board / Store
TB - Tallboy	WD - Washer & Dryer	RC Ledge - Reinforced Concrete Ledge
* Mirror Image	WI - Wine Chiller	AC Ledge - Air-conditioner Ledge

- Air-Conditioning condenser unit
- Wall not allowed to be hacked or altered (including by way of drilling)
- Services void space (excluded from strata area)
- Rainwater downpipe shaft space (excluded from strata area)

DISCLAIMER: Area includes balcony where applicable, and excludes among others, the air-conditioner (AC) ledge and RC - Reinforced Concrete Ledge. Please refer to the key plan for orientation. All floor plans are approximate measurements only and are subject to government re-survey. The Balcony shall not be enclosed unless with the approved balcony screen. The cost of screen and installation shall be borne by the Purchaser.



# 3-Bedroom Premium

## Type C4P

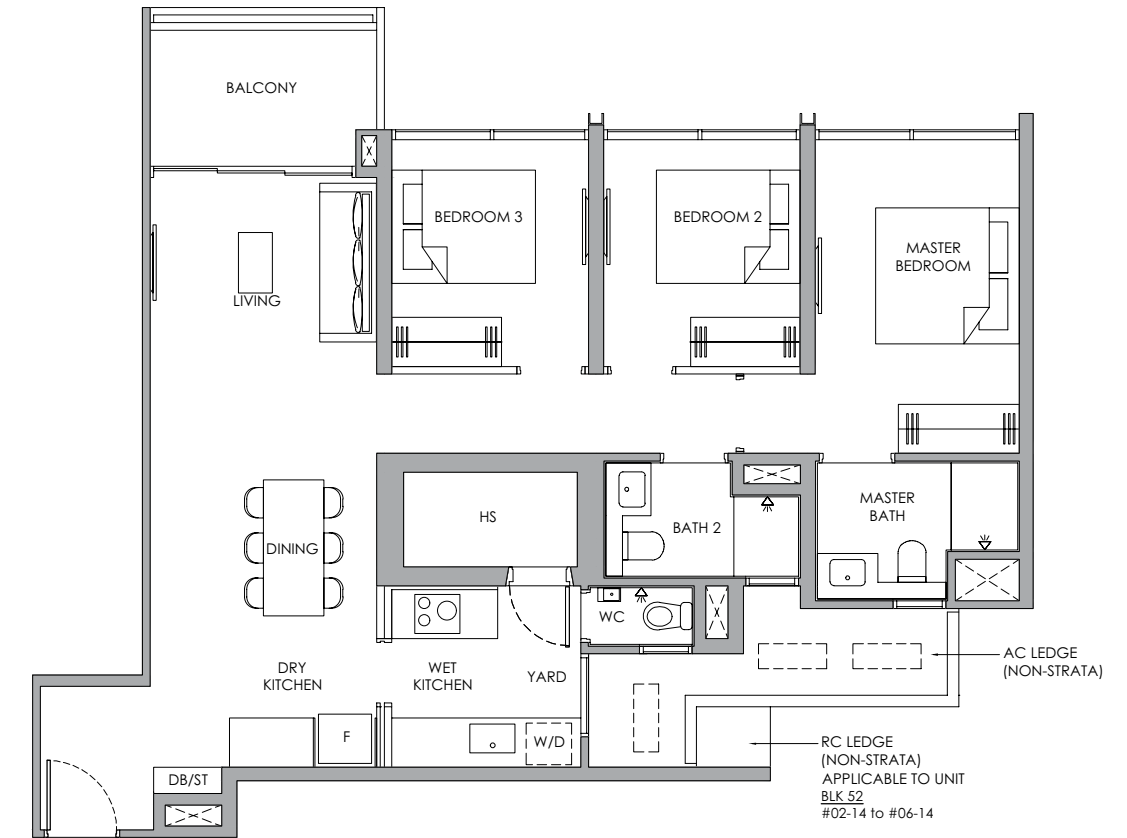
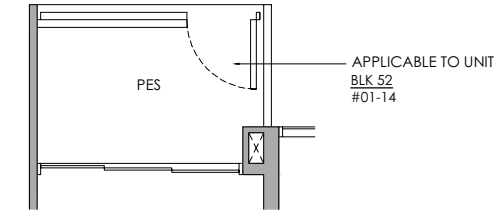
94 sqm / 1012 sqft

BLK 52  
#02-14 to #06-14

## Type C4P - PES

94 sqm / 1012 sqft

BLK 52  
#01-14

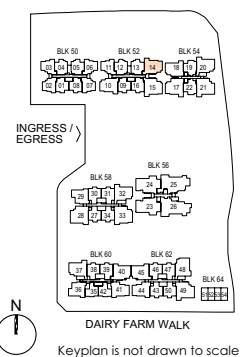


Legend (Where Applicable) :

F - Fridge	WC - Water Closet	SC / ST - Shoe Cabinet / Store
W/D - Washer cum Dryer	HS - Household Shelter	DB / ST - Distribution Board / Store
TB - Tallboy	WD - Washer & Dryer	RC Ledge - Reinforced Concrete Ledge
* Mirror Image	WI - Wine Chiller	AC Ledge - Air-conditioner Ledge

- Air-Conditioning condenser unit
- Wall not allowed to be hacked or altered (including by way of drilling)
- Services void space (excluded from strata area)
- Rainwater downpipe shaft space (excluded from strata area)

DISCLAIMER: Area includes balcony where applicable, and excludes among others, the air-conditioner (AC) ledge and RC - Reinforced Concrete Ledge. Please refer to the key plan for orientation. All floor plans are approximate measurements only and are subject to government re-survey. The Balcony shall not be enclosed unless with the approved balcony screen. The cost of screen and installation shall be borne by the Purchaser.



# 3-Bedroom Premium

## Type C5P

95 sqm / 1023 sqft

BLK 54  
#02-20 to #06-20\*

BLK 58  
#02-32 to #13-32\*

BLK 60  
#02-37 to #16-37

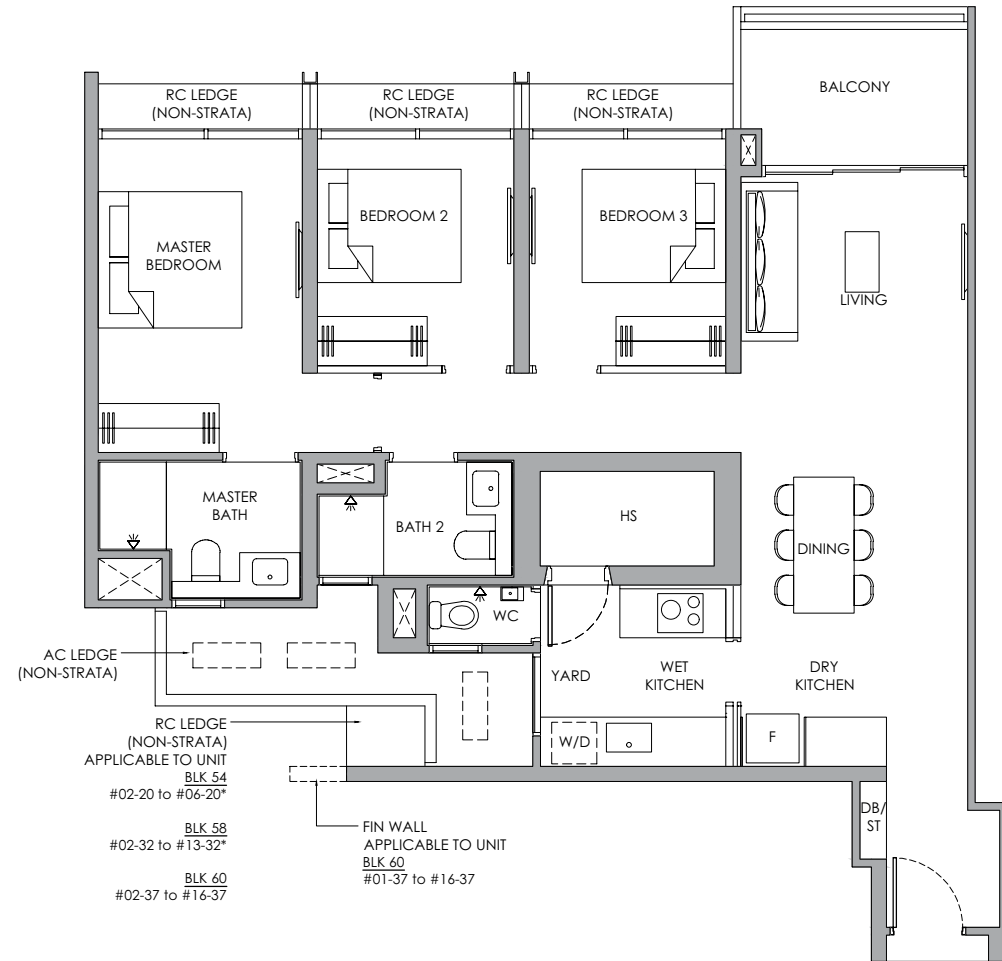
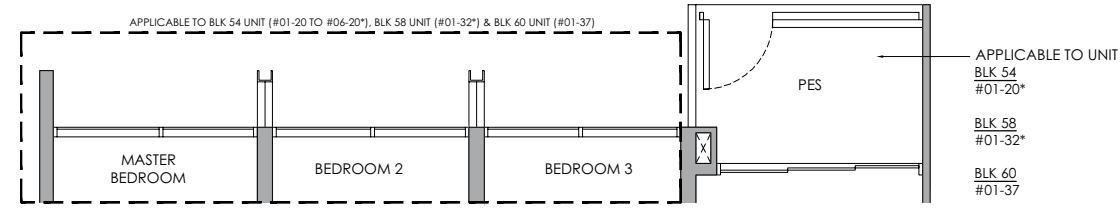
## Type C5P - PES

95 sqm / 1023 sqft

BLK 54  
#01-20\*

BLK 58  
#01-32\*

BLK 60  
#01-37

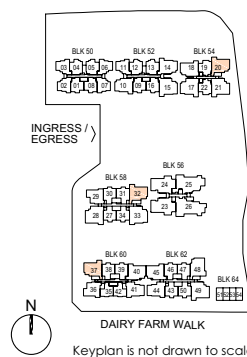


Legend (Where Applicable) :

F - Fridge	WC - Water Closet	SC / ST - Shoe Cabinet / Store
W/D - Washer cum Dryer	HS - Household Shelter	DB / ST - Distribution Board / Store
TB - Tallboy	WD - Washer & Dryer	RC Ledge - Reinforced Concrete Ledge
* Mirror Image	WI - Wine Chiller	AC Ledge - Air-conditioner Ledge

--- Air-Conditioning condenser unit  
 [ ] Wall not allowed to be hacked or altered (including by way of drilling)  
 [ ] Services void space (excluded from strata area)  
 [ ] Rainwater downpipe shaft space (excluded from strata area)

DISCLAIMER: Area includes balcony where applicable, and excludes among others, the air-conditioner (AC) ledge and RC - Reinforced Concrete Ledge. Please refer to the key plan for orientation. All floor plans are approximate measurements only and are subject to government re-survey. The Balcony shall not be enclosed unless with the approved balcony screen. The cost of screen and installation shall be borne by the Purchaser.



# 3-Bedroom Premium

## Type C6P

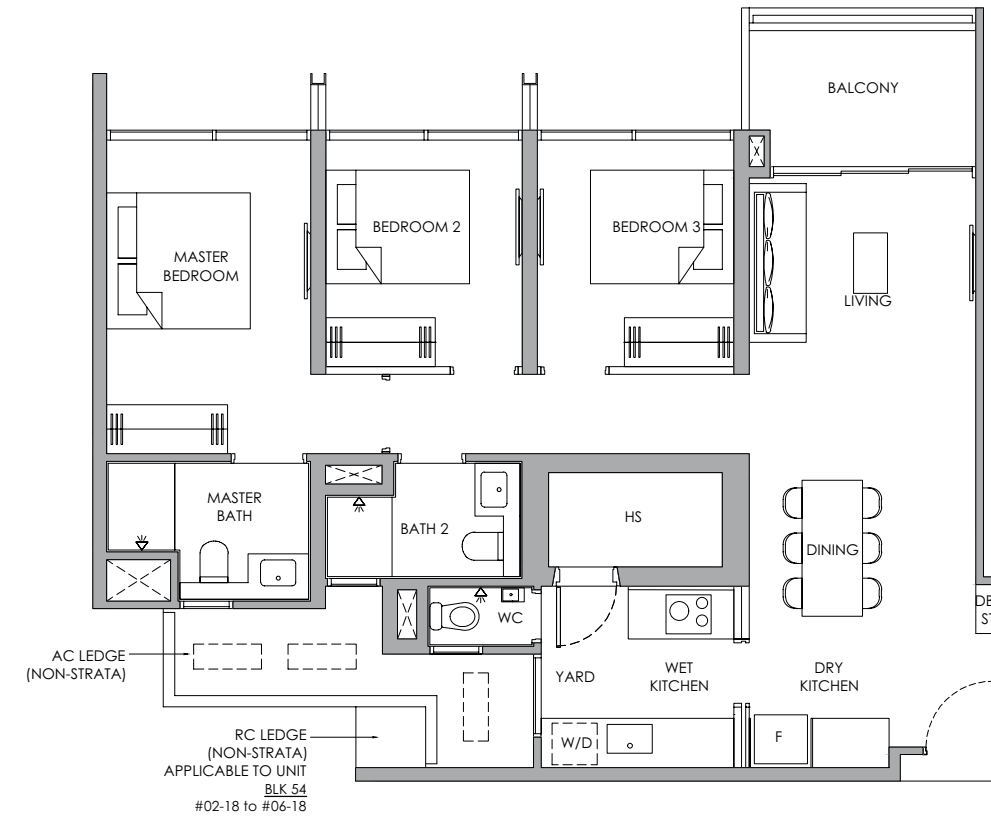
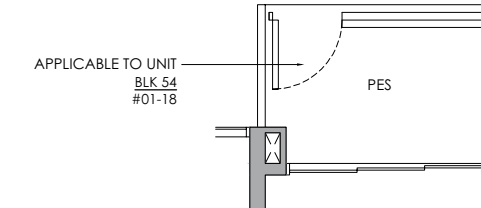
92 sqm / 990 sqft

BLK 54  
#02-18 to #06-18

## Type C6P - PES

92 sqm / 990 sqft

BLK 54  
#01-18

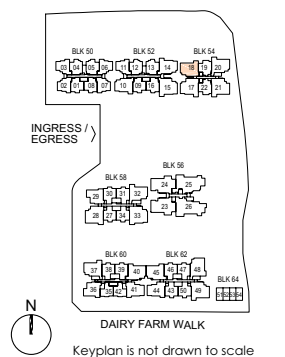


Legend (Where Applicable) :

F - Fridge	WC - Water Closet	SC / ST - Shoe Cabinet / Store
W/D - Washer cum Dryer	HS - Household Shelter	DB / ST - Distribution Board / Store
TB - Tallboy	WD - Washer & Dryer	RC Ledge - Reinforced Concrete Ledge
* Mirror Image	WI - Wine Chiller	AC Ledge - Air-conditioner Ledge

--- Air-Conditioning condenser unit  
 [ ] Wall not allowed to be hacked or altered (including by way of drilling)  
 [ ] Services void space (excluded from strata area)  
 [ ] Rainwater downpipe shaft space (excluded from strata area)

DISCLAIMER: Area includes balcony where applicable, and excludes among others, the air-conditioner (AC) ledge and RC - Reinforced Concrete Ledge. Please refer to the key plan for orientation. All floor plans are approximate measurements only and are subject to government re-survey. The Balcony shall not be enclosed unless with the approved balcony screen. The cost of screen and installation shall be borne by the Purchaser.



# 3-Bedroom Premium

## Type C7P

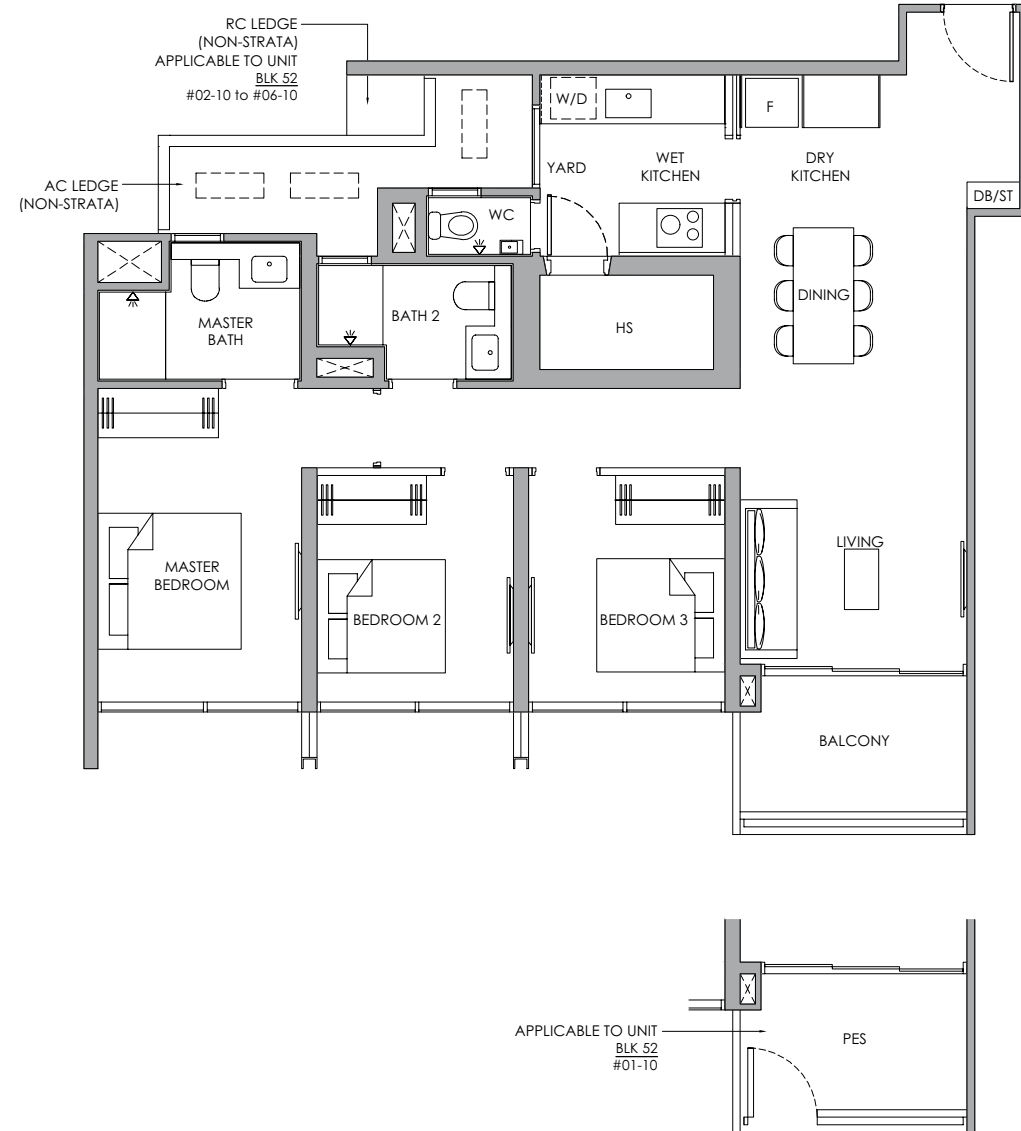
93 sqm / 1001 sqft

BLK 52  
#02-10 to #06-10

## Type C7P - PES

93 sqm / 1001 sqft

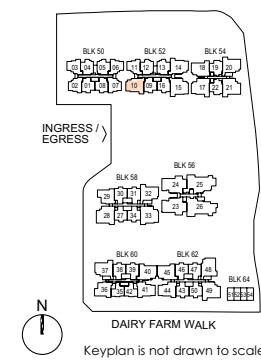
BLK 52  
#01-10



Legend (Where Applicable):  
 F - Fridge  
 W/D - Washer cum Dryer  
 TB - Tallboy  
 \* Mirror Image  
 WC - Water Closet  
 HS - Household Shelter  
 WD - Washer & Dryer  
 WI - Wine Chiller  
 SC / ST - Shoe Cabinet / Store  
 DB / ST - Distribution Board / Store  
 RC Ledge - Reinforced Concrete Ledge  
 AC Ledge - Air-conditioner Ledge

--- Air-Conditioning condenser unit  
 [ ] Wall not allowed to be hacked or altered (including by way of drilling)  
 [ ] Services void space (excluded from strata area)  
 [ ] Rainwater downpipe shaft space (excluded from strata area)

DISCLAIMER: Area includes balcony where applicable, and excludes among others, the air-conditioner (AC) ledge and RC - Reinforced Concrete Ledge. Please refer to the key plan for orientation. All floor plans are approximate measurements only and are subject to government re-survey. The Balcony shall not be enclosed unless with the approved balcony screen. The cost of screen and installation shall be borne by the Purchaser.



# 3-Bedroom Premium

## Type C8P

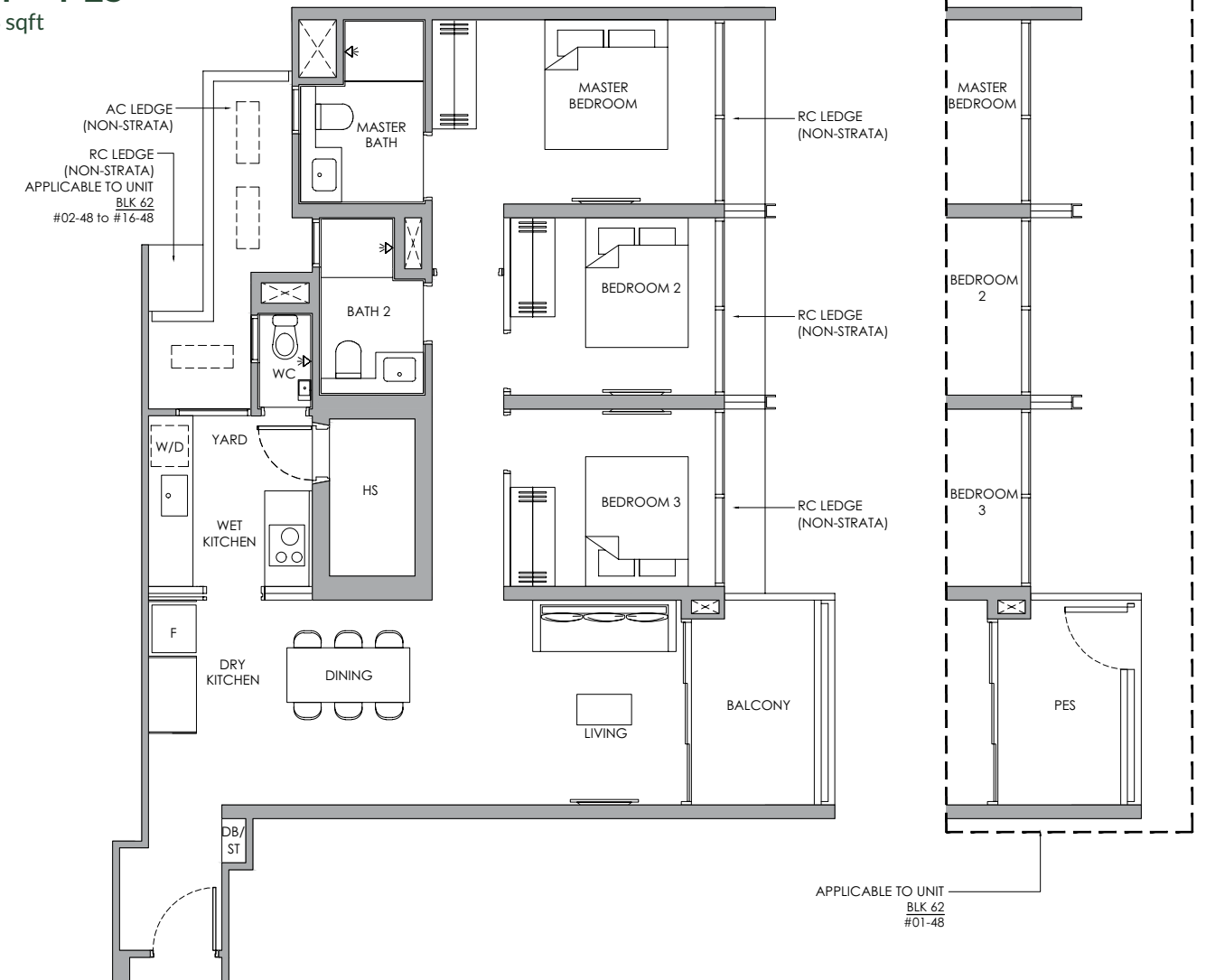
95 sqm / 1023 sqft

BLK 62  
#02-48 to #16-48

## Type C8P - PES

95 sqm / 1023 sqft

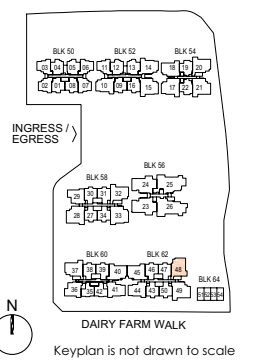
BLK 62  
#01-48



Legend (Where Applicable):  
 F - Fridge  
 W/D - Washer cum Dryer  
 TB - Tallboy  
 \* Mirror Image  
 WC - Water Closet  
 HS - Household Shelter  
 WD - Washer & Dryer  
 WI - Wine Chiller  
 SC / ST - Shoe Cabinet / Store  
 DB / ST - Distribution Board / Store  
 RC Ledge - Reinforced Concrete Ledge  
 AC Ledge - Air-conditioner Ledge

--- Air-Conditioning condenser unit  
 [ ] Wall not allowed to be hacked or altered (including by way of drilling)  
 [ ] Services void space (excluded from strata area)  
 [ ] Rainwater downpipe shaft space (excluded from strata area)

DISCLAIMER: Area includes balcony where applicable, and excludes among others, the air-conditioner (AC) ledge and RC - Reinforced Concrete Ledge. Please refer to the key plan for orientation. All floor plans are approximate measurements only and are subject to government re-survey. The Balcony shall not be enclosed unless with the approved balcony screen. The cost of screen and installation shall be borne by the Purchaser.



# 3-Bedroom with Study

**Type C9S**  
107 sqm / 1152 sqft

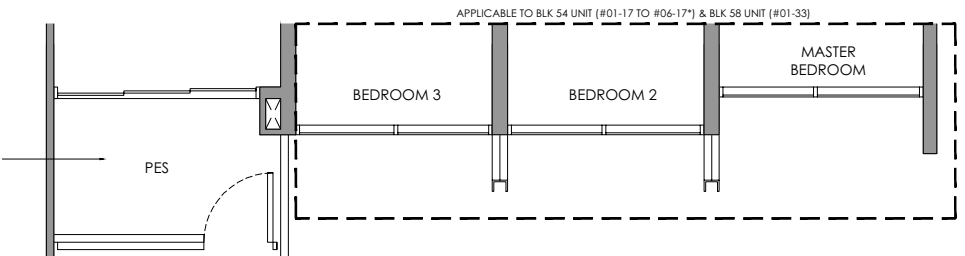
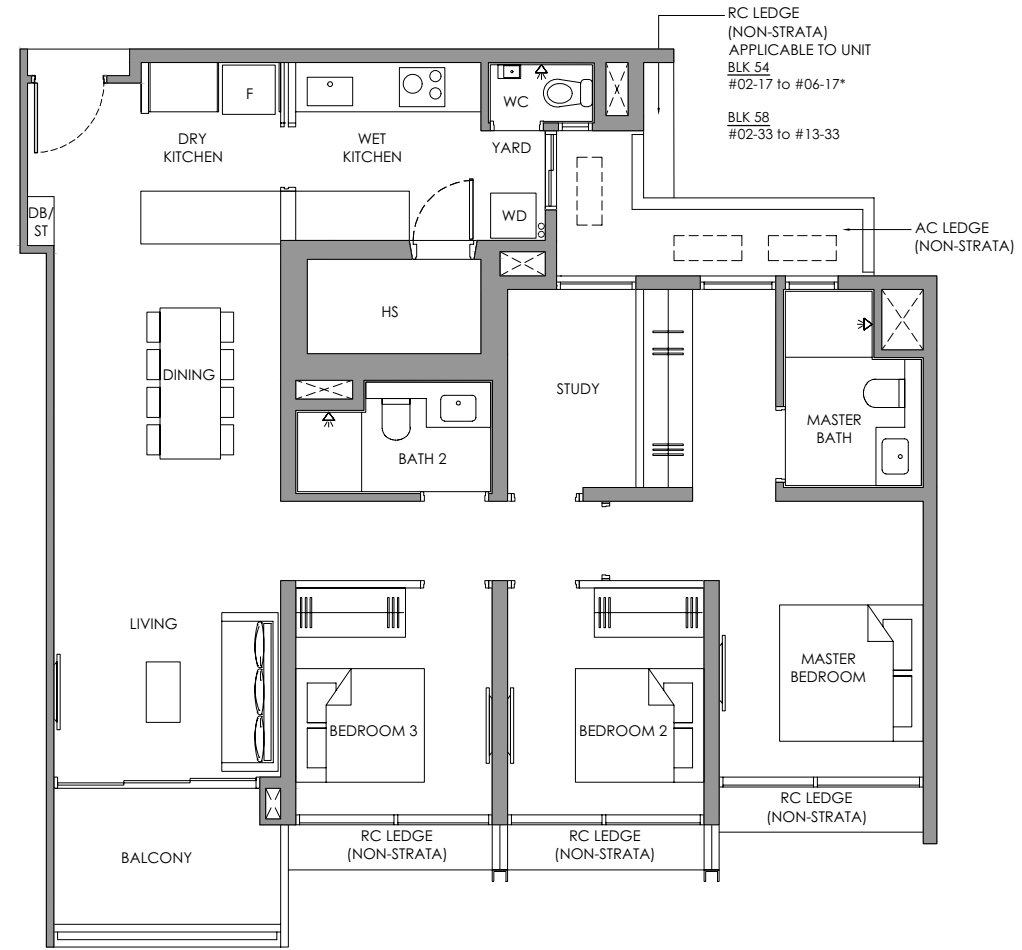
BLK 54  
#02-17 to #06-17\*

BLK 58  
#02-33 to #13-33

**Type C9S - PES**  
107 sqm / 1152 sqft

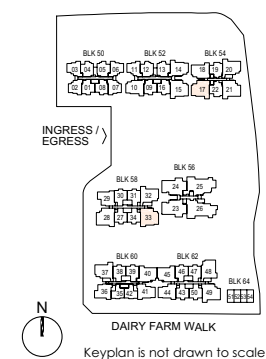
BLK 54  
#01-17\*

BLK 58  
#01-33



- Legend (Where Applicable) :
- F - Fridge
  - WC - Water Closet
  - SC / ST - Shoe Cabinet / Store
  - W/D - Washer cum Dryer
  - HS - Household Shelter
  - DB / ST - Distribution Board / Store
  - TB - Tallboy
  - WD - Washer & Dryer
  - RC Ledge - Reinforced Concrete Ledge
  - \* Mirror Image
  - WI - Wine Chiller
  - AC Ledge - Air-conditioner Ledge
- Air-Conditioning condenser unit
  - Wall not allowed to be hacked or altered (including by way of drilling)
  - Services void space (excluded from strata area)
  - Rainwater downpipe shaft space (excluded from strata area)

DISCLAIMER: Area includes balcony where applicable, and excludes among others, the air-conditioner (AC) ledge and RC - Reinforced Concrete Ledge. Please refer to the key plan for orientation. All floor plans are approximate measurements only and are subject to government re-survey. The Balcony shall not be enclosed unless with the approved balcony screen. The cost of screen and installation shall be borne by the Purchaser.



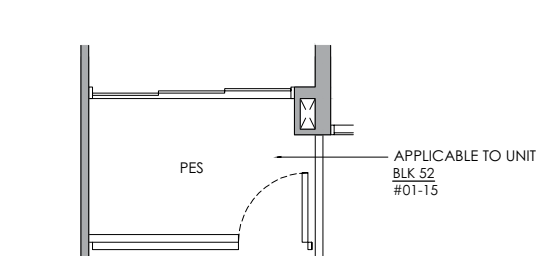
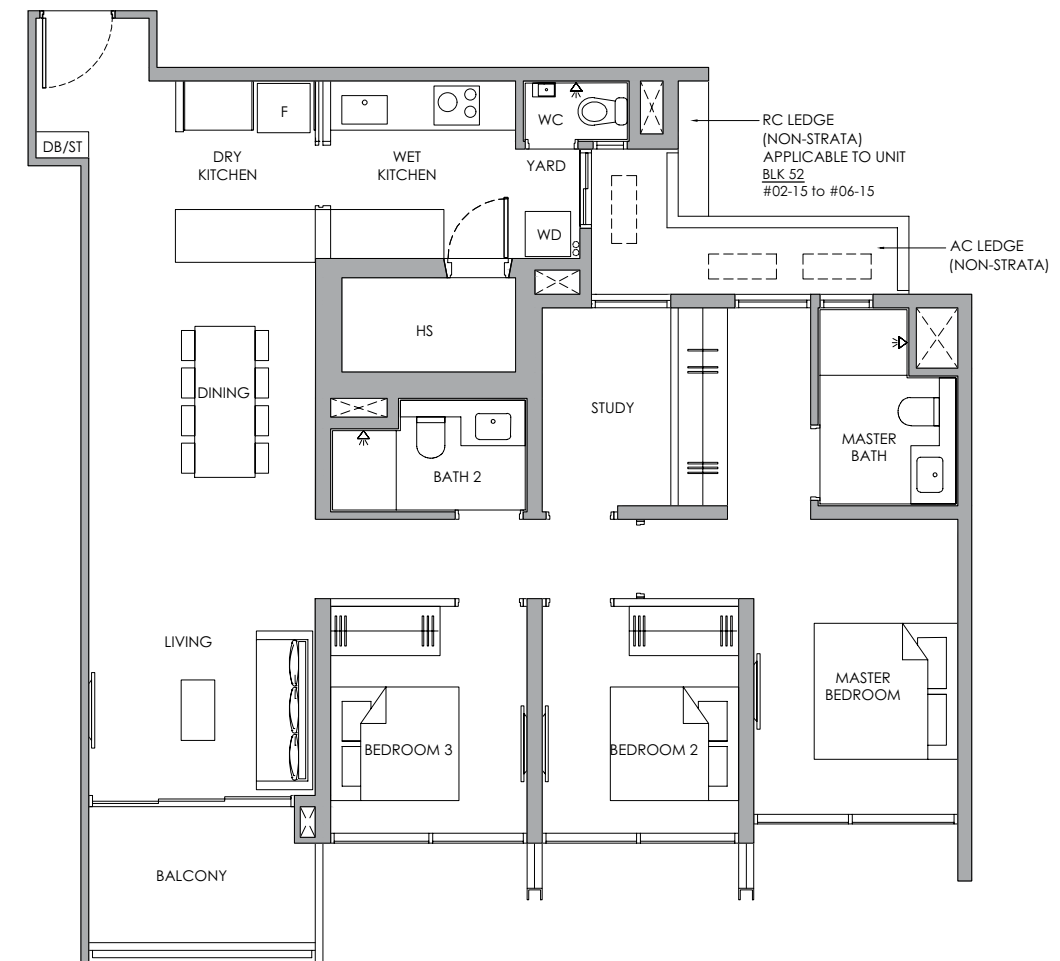
# 3-Bedroom with Study

**Type C10S**  
109 sqm / 1173 sqft

BLK 52  
#02-15 to #06-15

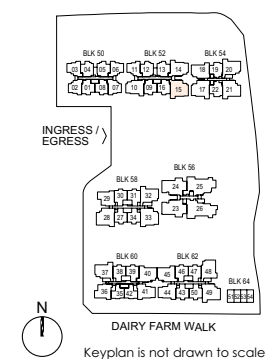
**Type C10S - PES**  
109 sqm / 1173 sqft

BLK 52  
#01-15



- Legend (Where Applicable) :
- F - Fridge
  - WC - Water Closet
  - SC / ST - Shoe Cabinet / Store
  - W/D - Washer cum Dryer
  - HS - Household Shelter
  - DB / ST - Distribution Board / Store
  - TB - Tallboy
  - WD - Washer & Dryer
  - RC Ledge - Reinforced Concrete Ledge
  - \* Mirror Image
  - WI - Wine Chiller
  - AC Ledge - Air-conditioner Ledge
- Air-Conditioning condenser unit
  - Wall not allowed to be hacked or altered (including by way of drilling)
  - Services void space (excluded from strata area)
  - Rainwater downpipe shaft space (excluded from strata area)

DISCLAIMER: Area includes balcony where applicable, and excludes among others, the air-conditioner (AC) ledge and RC - Reinforced Concrete Ledge. Please refer to the key plan for orientation. All floor plans are approximate measurements only and are subject to government re-survey. The Balcony shall not be enclosed unless with the approved balcony screen. The cost of screen and installation shall be borne by the Purchaser.



# 4-Bedroom Compact

## Type D1

107 sqm / 1152 sqft

BLK 54  
#02-21 to #06-21

BLK 58  
#02-28 to #13-28\*

BLK 62  
#02-49 to #16-49

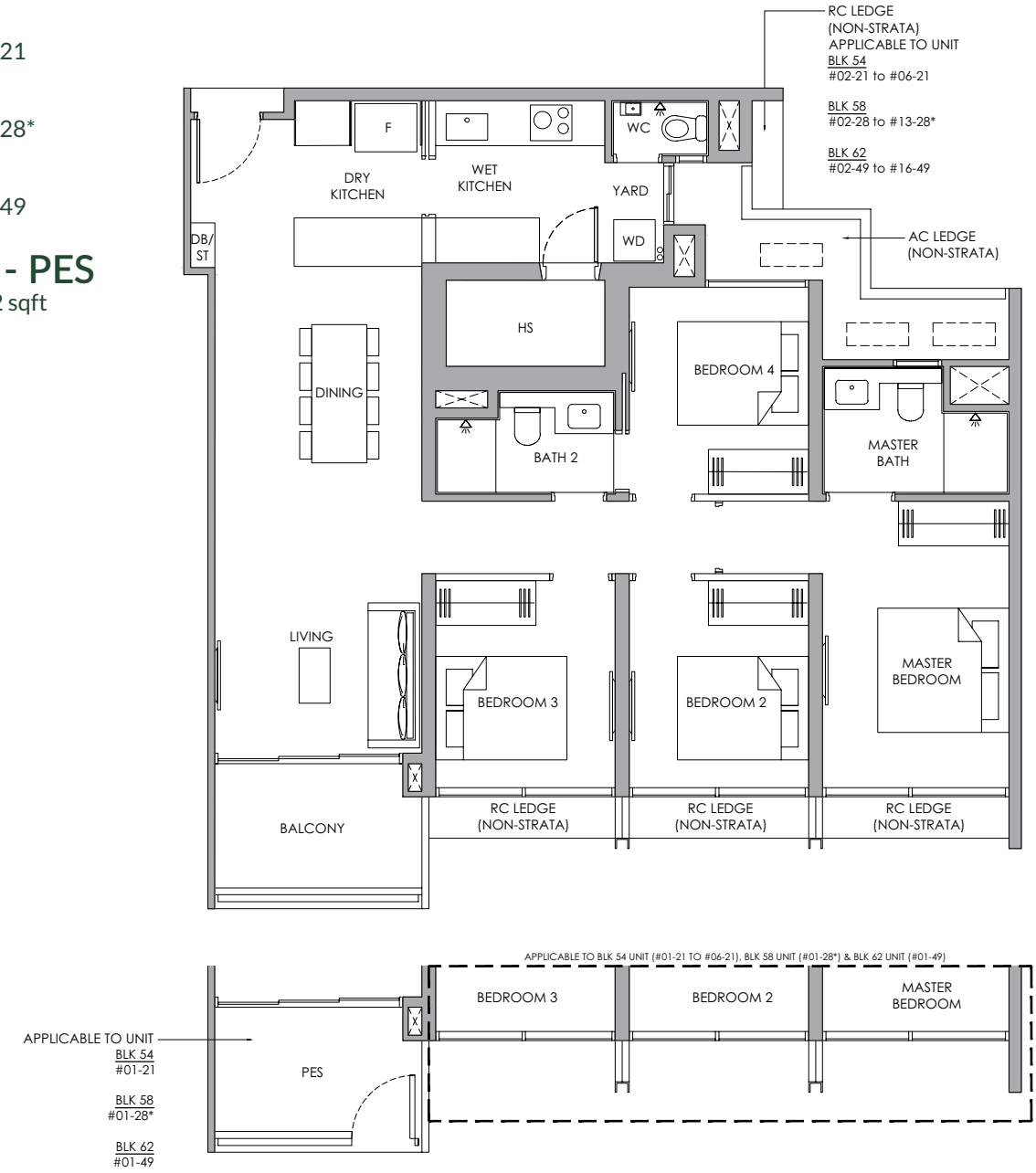
## Type D1 - PES

107 sqm / 1152 sqft

BLK 54  
#01-21

BLK 58  
#01-28\*

BLK 62  
#01-49



- Legend (Where Applicable):
- F - Fridge
  - W/D - Washer cum Dryer
  - TB - Tallboy
  - \* Mirror Image
  - WC - Water Closet
  - HS - Household Shelter
  - WD - Washer & Dryer
  - WI - Wine Chiller
  - SC / ST - Shoe Cabinet / Store
  - DB / ST - Distribution Board / Store
  - RC Ledge - Reinforced Concrete Ledge
  - AC Ledge - Air-conditioner Ledge

- Air-Conditioning condenser unit
- Wall not allowed to be hacked or altered (including by way of drilling)
- Services void space (excluded from strata area)
- Rainwater downpipe shaft space (excluded from strata area)

DISCLAIMER: Area includes balcony where applicable, and excludes among others, the air-conditioner (AC) ledge and RC - Reinforced Concrete Ledge. Please refer to the key plan for orientation. All floor plans are approximate measurements only and are subject to government re-survey. The Balcony shall not be enclosed unless with the approved balcony screen. The cost of screen and installation shall be borne by the Purchaser.

# 4-Bedroom Premium

## Type D2P

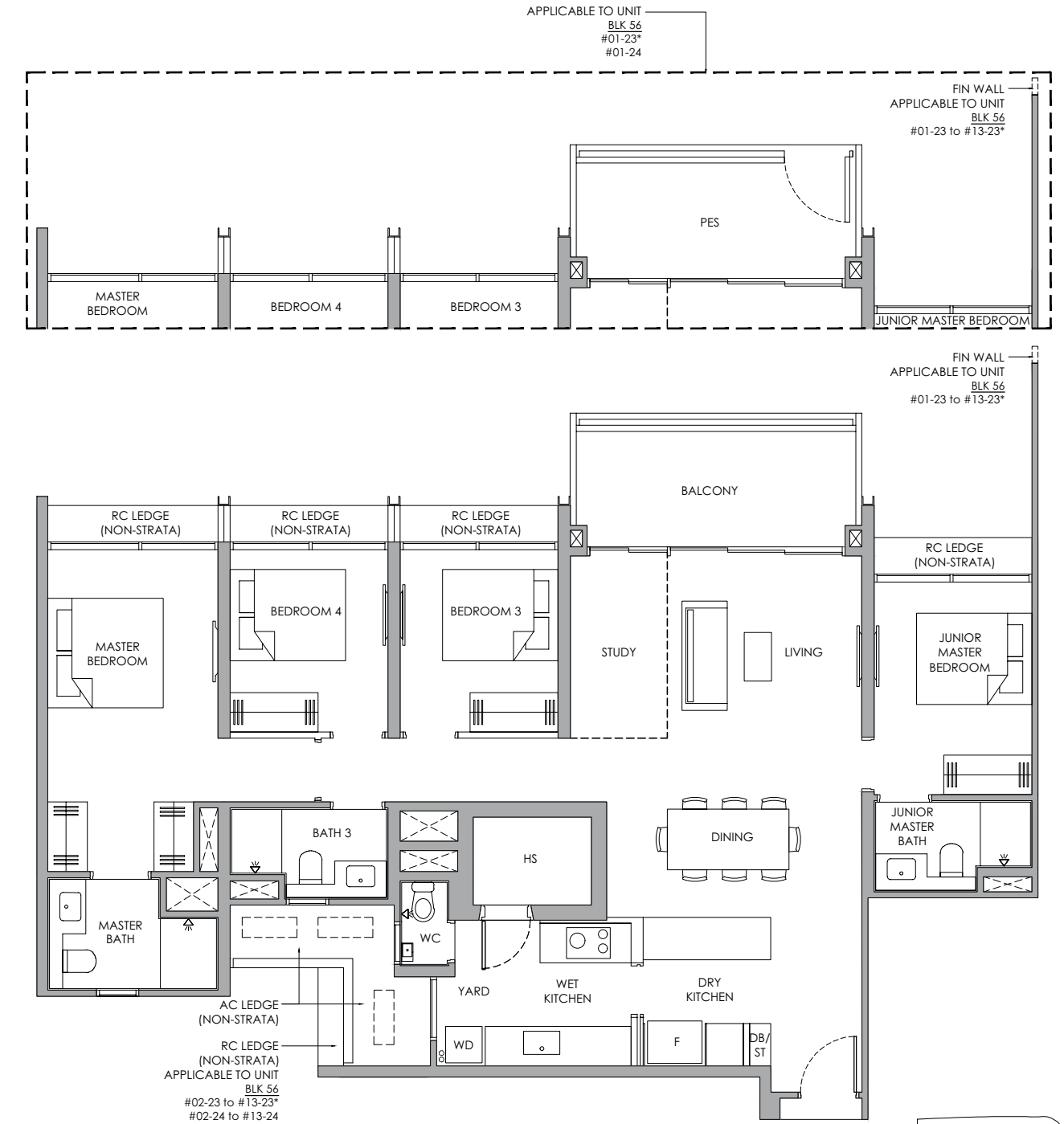
128 sqm / 1378 sqft

BLK 56  
#02-23 to #13-23\*  
#02-24 to #13-24

## Type D2P - PES

128 sqm / 1378 sqft

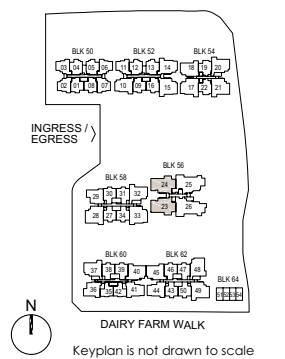
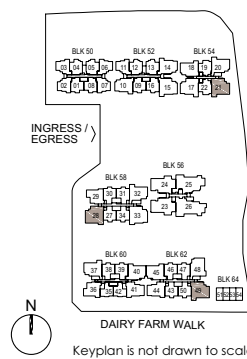
BLK 56  
#01-23\*  
#01-24



- Legend (Where Applicable):
- F - Fridge
  - W/D - Washer cum Dryer
  - TB - Tallboy
  - \* Mirror Image
  - WC - Water Closet
  - HS - Household Shelter
  - WD - Washer & Dryer
  - WI - Wine Chiller
  - SC / ST - Shoe Cabinet / Store
  - DB / ST - Distribution Board / Store
  - RC Ledge - Reinforced Concrete Ledge
  - AC Ledge - Air-conditioner Ledge

- Air-Conditioning condenser unit
- Wall not allowed to be hacked or altered (including by way of drilling)
- Services void space (excluded from strata area)
- Rainwater downpipe shaft space (excluded from strata area)

DISCLAIMER: Area includes balcony where applicable, and excludes among others, the air-conditioner (AC) ledge and RC - Reinforced Concrete Ledge. Please refer to the key plan for orientation. All floor plans are approximate measurements only and are subject to government re-survey. The Balcony shall not be enclosed unless with the approved balcony screen. The cost of screen and installation shall be borne by the Purchaser.



# 5-Bedroom with Private Lift

## Type E1

154 sqm / 1658 sqft

BLK 56

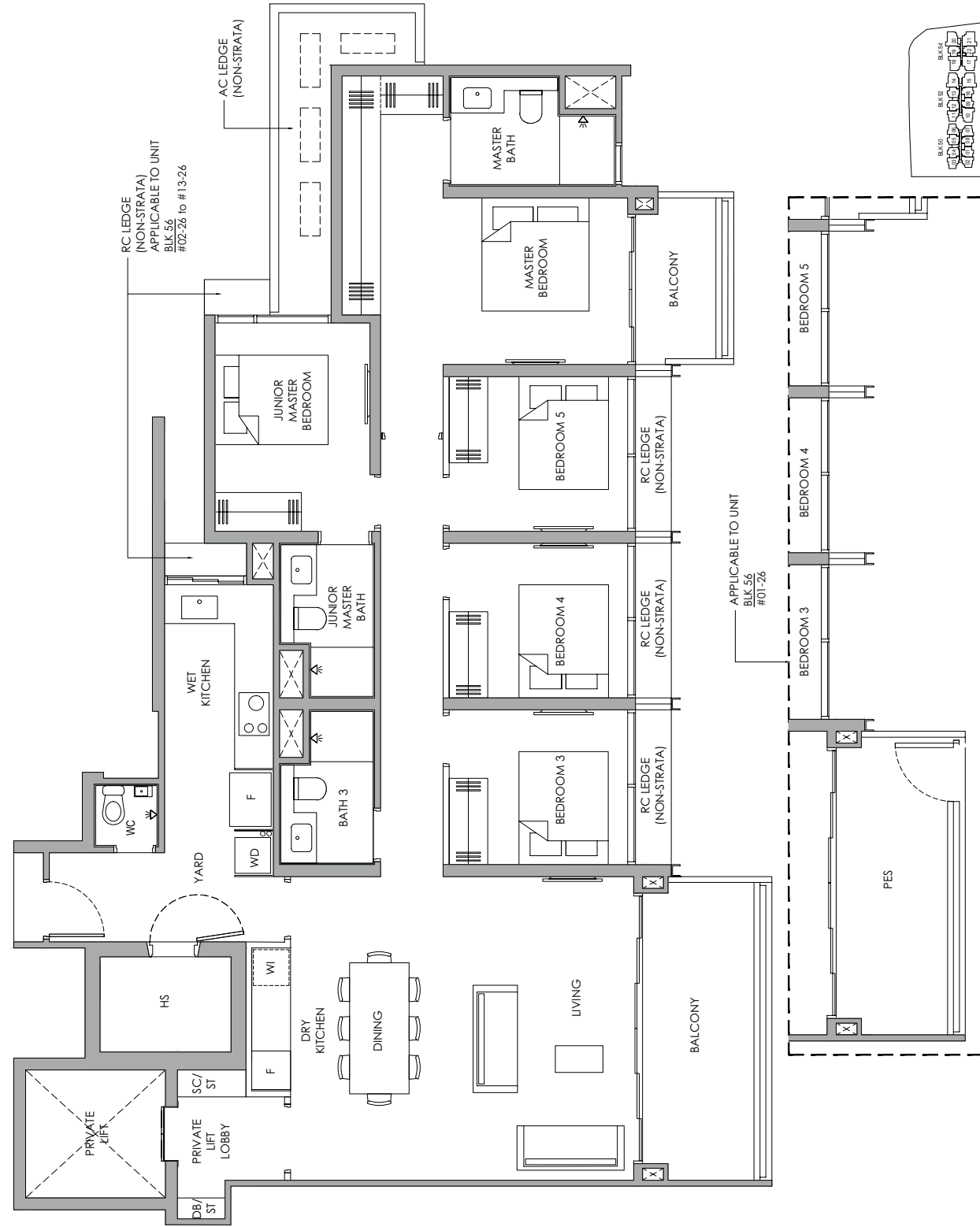
#02-26 to #13-26

## Type E1 - PES

154 sqm / 1658 sqft

BLK 56

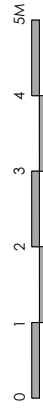
#01-26



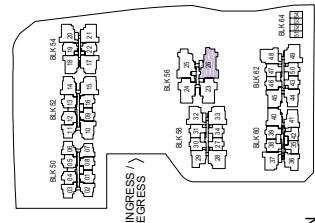
### Legend (Where Applicable) :

- F - Fridge
- W/D - Washer cum Dryer
- TB - Tallboy
- \* Mirror Image
- AK - Air Conditioning condenser unit
- Wall not allowed to be hacked or altered (including by way of drilling)
- Services void space (excluded from strata area)
- Waterdownpipe shaft space (excluded from strata area)
- WC - Water Closet
- HS - Household Shelter
- WD - Washer & Dryer
- WI - Wine Chiller
- SC / ST - Shoe Cabinet / Store
- DB / ST - Distribution Board / Store
- RC Ledge - Reinforced Concrete Ledge
- AC Ledge - Air-conditioner Ledge

DISCLAIMER: Area includes balcony where applicable, and excludes among others, the air-conditioner (AC) ledge and RC Reinforced Concrete Ledge. Please refer to the key plan for orientation. All floor plans are approximate measurements only and are subject to government re-survey. The Balcony shall not be enclosed unless with the approved balcony screen. The cost of screen and installation shall be borne by the Purchaser.



Keyplan is not drawn to scale



# 5-Bedroom with Private Lift

## Type E2

156 sqm / 1679 sqft

BLK 56

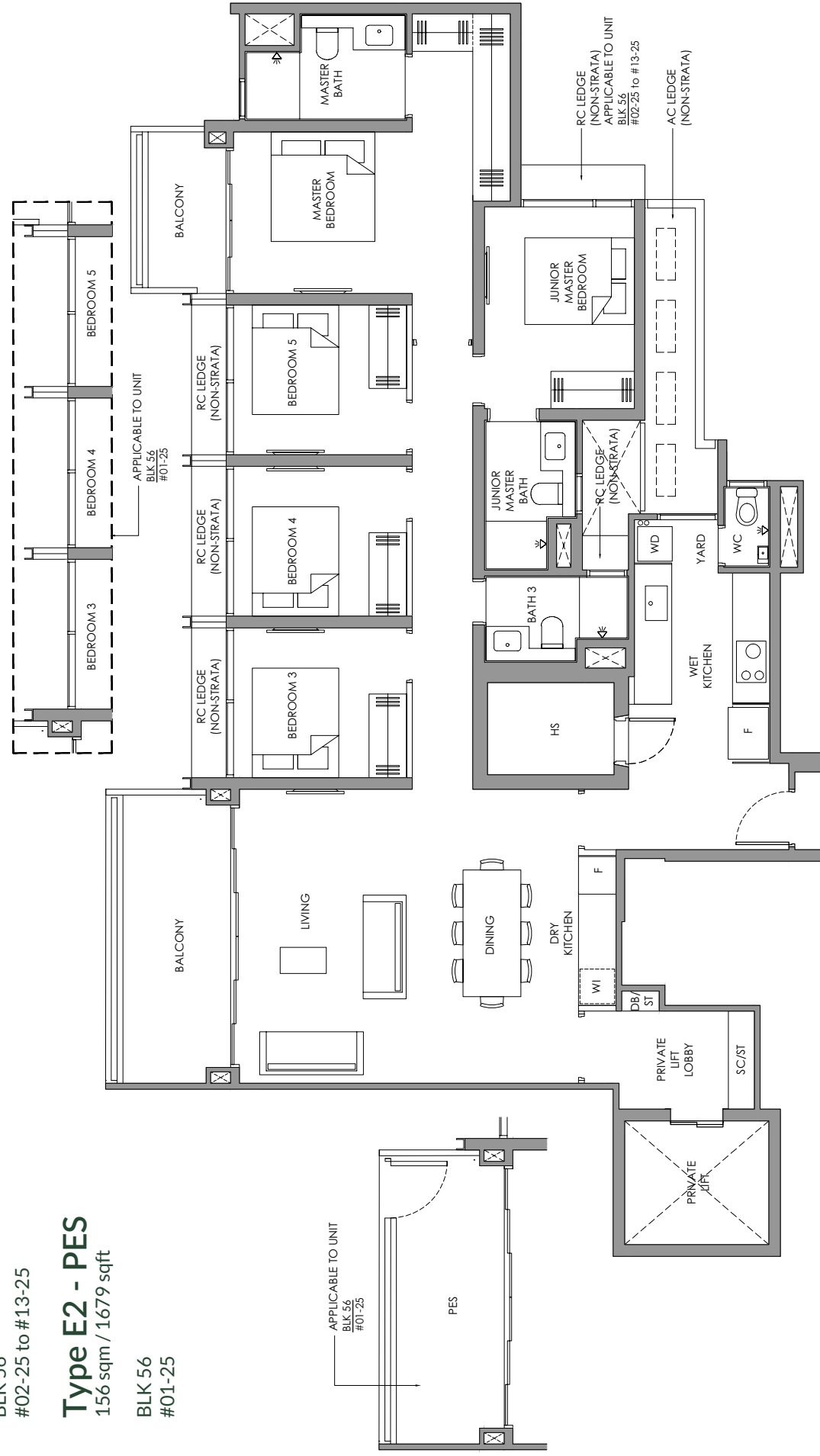
#02-25 to #13-25

## Type E2 - PES

156 sqm / 1679 sqft

BLK 56

#01-25



### Legend (Where Applicable) :

- F - Fridge
- W/D - Washer cum Dryer
- TB - Tallboy
- \* Mirror Image
- AK - Air Conditioning condenser unit
- Wall not allowed to be hacked or altered (including by way of drilling)
- Services void space (excluded from strata area)
- Waterdownpipe shaft space (excluded from strata area)
- WC - Water Closet
- HS - Household Shelter
- WD - Washer & Dryer
- WI - Wine Chiller
- SC / ST - Shoe Cabinet / Store
- DB / ST - Distribution Board / Store
- RC Ledge - Reinforced Concrete Ledge
- AC Ledge - Air-conditioner Ledge

DISCLAIMER: Area includes balcony where applicable, and excludes among others, the air-conditioner (AC) ledge and RC Reinforced Concrete Ledge. Please refer to the key plan for orientation. All floor plans are approximate measurements only and are subject to government re-survey. The Balcony shall not be enclosed unless with the approved balcony screen. The cost of screen and installation shall be borne by the Purchaser.



Keyplan is not drawn to scale

